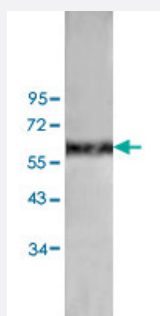


# ANGPT1 polyclonal antibody

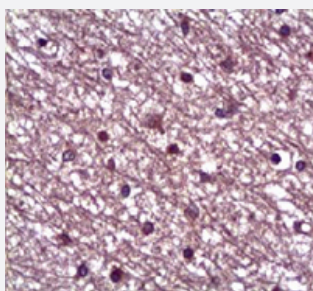
Catalog # PAB19773      Size 100 ug

## Applications



### Western Blot (Tissue lysate)

Western blot analysis of human heart tissue lysate with ANGPT1 polyclonal antibody (Cat # PAB19773) at 1:200 dilution.



### Immunohistochemistry (Formalin/PFA-fixed paraffin-embedded sections)

Immunohistochemical staining of formalin-fixed paraffin-embedded human heart showing staining with ANGPT1 polyclonal antibody (Cat # PAB19773) at 1:100 dilution.

## Specification

<b>Product Description</b>	Rabbit polyclonal antibody raised against synthetic peptide of ANGPT1.
<b>Immunogen</b>	A synthetic peptide corresponding to 15 amino acids near N-terminus of human ANGPT1.
<b>Host</b>	Rabbit
<b>Reactivity</b>	Human, Mouse
<b>Form</b>	Liquid
<b>Purification</b>	Peptide affinity purification

<b>Recommend Usage</b>	ELISA (1:5000-1:20000) Western Blot (1:200-500) Immunohistochemistry (1:50-200) The optimal working dilution should be determined by the end user.
<b>Storage Buffer</b>	In serum (0.02% sodium azide)
<b>Storage Instruction</b>	Store at 4°C for three months. For long term storage store at -20°C. Aliquot to avoid repeated freezing and thawing.
<b>Note</b>	This product contains sodium azide: a POISONOUS AND HAZARDOUS SUBSTANCE which should be handled by trained staff only.

## Applications

- Western Blot (Tissue lysate)

Western blot analysis of human heart tissue lysate with ANGPT1 polyclonal antibody (Cat # PAB19773) at 1:200 dilution.

- Immunohistochemistry (Formalin/PFA-fixed paraffin-embedded sections)

Immunohistochemical staining of formalin-fixed paraffin-embedded human heart showing staining with ANGPT1 polyclonal antibody (Cat # PAB19773) at 1:100 dilution.

- Enzyme-linked Immunoabsorbent Assay

## Gene Info — ANGPT1

<b>Entrez GeneID</b>	<a href="#">284</a>
<b>Protein Accession#</b>	<a href="#">Q15389</a>
<b>Gene Name</b>	ANGPT1
<b>Gene Alias</b>	AGP1, AGPT, ANG1
<b>Gene Description</b>	angiopoietin 1
<b>Omim ID</b>	<a href="#">601667</a>
<b>Gene Ontology</b>	<a href="#">Hyperlink</a>

**Gene Summary**

Angiopoietins are proteins with important roles in vascular development and angiogenesis. All angiopoietins bind with similar affinity to an endothelial cell-specific tyrosine-protein kinase receptor. The protein encoded by this gene is a secreted glycoprotein that activates the receptor by inducing its tyrosine phosphorylation. It plays a critical role in mediating reciprocal interactions between the endothelium and surrounding matrix and mesenchyme. The protein also contributes to blood vessel maturation and stability, and may be involved in early development of the heart. [provided by RefSeq]

**Other Designations**

-

**Disease**

- [Angina Pectoris](#)
- [Coronary Disease](#)
- [Drug Toxicity](#)
- [Edema](#)
- [Genetic Predisposition to Disease](#)
- [Hypercholesterolemia](#)
- [Liver Cirrhosis](#)
- [Myocardial Infarction](#)
- [Stroke](#)