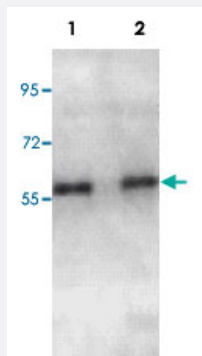


ADRA1D polyclonal antibody

Catalog # PAB19748

Size 100 ug

Applications



Western Blot (Cell lysate)

Western blot analysis of A-549 (Lane 1) and MCF-7 (Lane 2) cell lysate with ADRA1D polyclonal antibody (Cat # PAB19748) at 1:1000 dilution.

Specification

Product Description Rabbit polyclonal antibody raised against synthetic peptide of ADRA1D.

Immunogen A synthetic peptide corresponding to internal region of human ADRA1D.

Host Rabbit

Reactivity Fruit fly, Human, Mouse, Rat, Zebra fish

Form Liquid

Purification Protein A purification

Recommend Usage ELISA (1:10000-1:40000)
Western Blot (1:500-2000)
The optimal working dilution should be determined by the end user.

Storage Buffer In serum (0.02% sodium azide)

Storage Instruction Store at 4°C for three months. For long term storage store at -20°C.
Aliquot to avoid repeated freezing and thawing.

Note

This product contains sodium azide: a POISONOUS AND HAZARDOUS SUBSTANCE which should be handled by trained staff only.

Applications

- Western Blot (Cell lysate)

Western blot analysis of A-549 (Lane 1) and MCF-7 (Lane 2) cell lysate with ADRA1D polyclonal antibody (Cat # PAB19748) at 1:1000 dilution.

- Enzyme-linked Immunoabsorbent Assay

Gene Info — ADRA1D

Entrez GeneID [146](#)

Protein Accession# [P25100](#)

Gene Name ADRA1D

Gene Alias ADRA1, ADRA1A, ADRA1R, ALPHA1, DAR, dJ779E11.2

Gene Description adrenergic, alpha-1D-, receptor

Omim ID [104219](#)

Gene Ontology [Hyperlink](#)

Gene Summary Alpha-1-adrenergic receptors (alpha-1-ARs) are members of the G protein-coupled receptor superfamily. They activate mitogenic responses and regulate growth and proliferation of many cells. There are 3 alpha-1-AR subtypes: alpha-1A, -1B and -1D, all of which signal through the Gq/11 family of G-proteins and different subtypes show different patterns of activation. This gene encodes alpha-1D-adrenergic receptor. Similar to alpha-1B-adrenergic receptor gene, this gene comprises 2 exons and a single intron that interrupts the coding region. [provided by RefSeq]

Other Designations OTTHUMP00000030160|adrenergic, alpha -1D-, receptor|adrenergic, alpha-1A-, receptor|alpha-1D-adrenergic receptor

Pathway

- [Calcium signaling pathway](#)
- [Neuroactive ligand-receptor interaction](#)

- [Vascular smooth muscle contraction](#)

Disease

- [Cardiomyopathy](#)
- [Cardiovascular Diseases](#)
- [Cystitis](#)
- [Diabetes Mellitus](#)
- [Edema](#)
- [Gastroparesis](#)
- [Genetic Predisposition to Disease](#)
- [Mental Disorders](#)