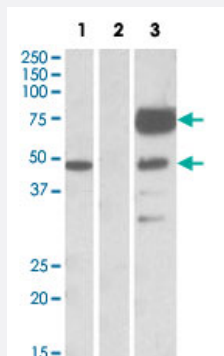


ANGPT1 polyclonal antibody

Catalog # PAB19687 Size 100 ug

Applications



Western Blot (Transfected lysate)

HEK293 lysate (10 ug protein in RIPA buffer) overexpressing human ANGPT1 with DYKDDDDK tag probed with ANGPT1 polyclonal antibody (Cat # PAB19687) (1 ug/mL) in lane 1 and probed with anti-DYKDDDDK Tag (1/1000) in lane 3. Mock-transfected HEK293 probed with ANGPT1 polyclonal antibody (Cat # PAB19687) (1 mg/mL) in lane 2. Primary incubations were for 1 hour. Detected by chemiluminescence.

Specification

Product Description	Goat polyclonal antibody raised against synthetic peptide of ANGPT1.
Immunogen	A synthetic peptide corresponding to internal region of human ANGPT1.
Sequence	C-PDFSSQKLQH
Host	Goat
Theoretical MW (kDa)	48
Reactivity	Human
Form	Liquid
Purification	Antigen affinity purification
Recommend Usage	Western Blot (1-2 ug/mL) The optimal working dilution should be determined by the end user.
Storage Buffer	In Tris saline, pH 7.3 (0.5% BSA, 0.02% sodium azide)

Storage Instruction

Store at -20°C.
Aliquot to avoid repeated freezing and thawing.

Note

This product contains sodium azide: a POISONOUS AND HAZARDOUS SUBSTANCE which should be handled by trained staff only.

Applications

- Western Blot (Transfected lysate)

HEK293 lysate (10 ug protein in RIPA buffer) overexpressing human ANGPT1 with DYKDDDDK tag probed with ANGPT1 polyclonal antibody (Cat # PAB19687) (1 ug/mL) in lane 1 and probed with anti- DYKDDDDK Tag (1/1000) in lane 3. Mock-transfected HEK293 probed with ANGPT1 polyclonal antibody (Cat # PAB19687) (1 mg/mL) in lane 2. Primary incubations were for 1 hour. Detected by chemiluminescence.

- Enzyme-linked Immunoabsorbent Assay

Gene Info — ANGPT1

Entrez GeneID[284](#)**Protein Accession#**[NP_001137.2](#)**Gene Name**

ANGPT1

Gene Alias

AGP1, AGPT, ANG1

Gene Description

angiopoietin 1

Omim ID[601667](#)**Gene Ontology**[Hyperlink](#)**Gene Summary**

Angiopoietins are proteins with important roles in vascular development and angiogenesis. All angiopoietins bind with similar affinity to an endothelial cell-specific tyrosine-protein kinase receptor. The protein encoded by this gene is a secreted glycoprotein that activates the receptor by inducing its tyrosine phosphorylation. It plays a critical role in mediating reciprocal interactions between the endothelium and surrounding matrix and mesenchyme. The protein also contributes to blood vessel maturation and stability, and may be involved in early development of the heart. [provided by RefSeq]

Other Designations

-

Disease

- [Angina Pectoris](#)
- [Coronary Disease](#)
- [Drug Toxicity](#)
- [Edema](#)
- [Genetic Predisposition to Disease](#)
- [Hypercholesterolemia](#)
- [Liver Cirrhosis](#)
- [Myocardial Infarction](#)
- [Stroke](#)