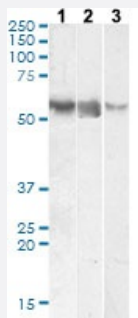


RORC polyclonal antibody

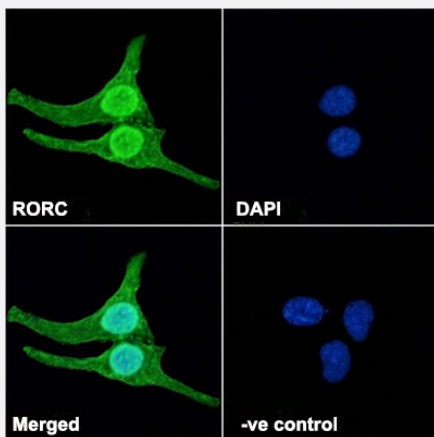
Catalog # PAB19661 Size 100 ug

Applications



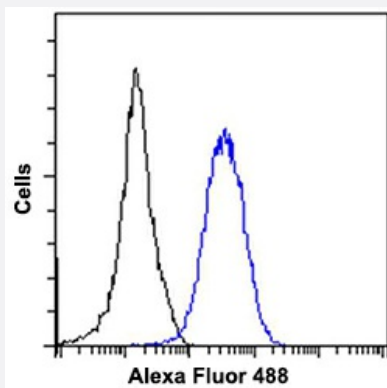
Western Blot (Tissue lysate)

RORC polyclonal antibody (Cat # PAB19661) (0.1 ug/mL) staining of Human Colon (A), (0.03 ug/mL) Liver (B) and (0.01 ug/mL) Testes (C) lysate (35 ug protein in RIPA buffer). Detected by chemiluminescence.



Immunofluorescence

RORC polyclonal antibody (Cat # PAB19661) Immunofluorescence analysis of paraformaldehyde fixed U2OS cells, permeabilized with 0.15% Triton. Primary incubation 1hr (10 ug/mL) followed by Alexa Fluor 488 secondary antibody (2 ug/mL), showing nuclear, cytoplasmic and plasma membrane staining. The nuclear stain is DAPI (blue). Negative control: Unimmunized goat IgG (10 ug/mL) followed by Alexa Fluor 488 secondary antibody (2 ug/mL).



Flow Cytometry

RORC polyclonal antibody (Cat # PAB19661) Flow cytometric analysis of paraformaldehyde fixed HeLa cells (blue line), permeabilized with 0.5% Triton. Primary incubation 1hr (10 ug/mL) followed by Alexa Fluor 488 secondary antibody (1 ug/mL). IgG control: Unimmunized goat IgG (black line) followed by Alexa Fluor 488 secondary antibody.

Specification

Product Description	Goat polyclonal antibody raised against synthetic peptide of RORC.
Immunogen	A synthetic peptide corresponding to amino acids 200-212 at internal region of human RORC.
Sequence	CHLEYSPEERGKAE
Host	Goat
Theoretical MW (kDa)	55.8
Reactivity	Human
Specificity	This antibody is expected to recognize both reported isoforms (NP_005051.2; NP_001001523.1).
Form	Liquid
Purification	Antigen affinity purification
Recommend Usage	ELISA (1:16000) Flow Cytometry (10 ug/mL) Immunofluorescence (10 ug/mL) Western Blot (0.01-0.1 ug/mL) The optimal working dilution should be determined by the end user.
Storage Buffer	In Tris saline, pH 7.3 (0.5% BSA, 0.02% sodium azide)
Storage Instruction	Store at -20°C. Aliquot to avoid repeated freezing and thawing.
Note	This product contains sodium azide: a POISONOUS AND HAZARDOUS SUBSTANCE which should be handled by trained staff only.

Applications

- Western Blot (Tissue lysate)

RORC polyclonal antibody (Cat # PAB19661) (0.1 ug/mL) staining of Human Colon (A), (0.03 ug/mL) Liver (B) and (0.01 ug/mL) Testes (C) lysate (35 ug protein in RIPA buffer). Detected by chemiluminescence.

- Immunofluorescence

RORC polyclonal antibody (Cat # PAB19661) Immunofluorescence analysis of paraformaldehyde fixed U2OS cells, permeabilized with 0.15% Triton. Primary incubation 1hr (10 ug/mL) followed by Alexa Fluor 488 secondary antibody (2 ug/mL), showing nuclear, cytoplasmic and plasma membrane staining. The nuclear stain is DAPI (blue). Negative control: Unimmunized goat IgG (10 ug/mL) followed by Alexa Fluor 488 secondary antibody (2 ug/mL).

- Enzyme-linked Immunoabsorbent Assay

- Flow Cytometry

RORC polyclonal antibody (Cat # PAB19661) Flow cytometric analysis of paraformaldehyde fixed HeLa cells (blue line), permeabilized with 0.5% Triton. Primary incubation 1hr (10 ug/mL) followed by Alexa Fluor 488 secondary antibody (1 ug/mL). IgG control: Unimmunized goat IgG (black line) followed by Alexa Fluor 488 secondary antibody.

Gene Info — RORC

Entrez GeneID [6097](#)

Protein Accession# [NP_005051.2;NP_001001523.1](#)

Gene Name RORC

Gene Alias MGC129539, NR1F3, RORG, RZR-GAMMA, RZRG, TOR

Gene Description RAR-related orphan receptor C

Omim ID [602943](#)

Gene Ontology [Hyperlink](#)

Gene Summary The protein encoded by this gene is a DNA-binding transcription factor and is a member of the NR1 subfamily of nuclear hormone receptors. The specific functions of this protein are not known; however, studies of a similar gene in mice have shown that this gene may be essential for lymphoid organogenesis and may play an important regulatory role in thymopoiesis. In addition, studies in mice suggest that the protein encoded by this gene may inhibit the expression of Fas ligand and IL2. Two transcript variants encoding different isoforms have been found for this gene. [provided by RefSeq]

Other Designations OTTHUMP00000015253|RAR-related orphan receptor C, isoform a|RAR-related orphan receptor gamma|nuclear receptor ROR-gamma|retinoic acid-binding receptor gamma|retinoid-related orphan receptor gamma

Disease

- [Lymphedema](#)
- [Tobacco Use Disorder](#)