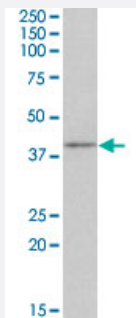


Cd28 polyclonal antibody

Catalog # PAB19641 Size 100 ug

Applications



Western Blot (Tissue lysate)

Cd28 polyclonal antibody (Cat # PAB19641) (0.3 ug/mL) staining of mouse thymus lysate (35 ug protein in RIPA buffer). Primary incubation was 1 hour. Detected by chemiluminescence.

Specification

Product Description	Goat polyclonal antibody raised against synthetic peptide of Cd28.
Immunogen	A synthetic peptide corresponding to internal region of mouse Cd28.
Sequence	KEKHLCHTQSSPK
Host	Goat
Theoretical MW (kDa)	25.2
Reactivity	Mouse
Specificity	The immunizing peptide represents a part of the extracellular domain.
Form	Liquid
Purification	Antigen affinity purification
Recommend Usage	ELISA (1:16000) Western Blot (0.3-1 ug/mL) The optimal working dilution should be determined by the end user.
Storage Buffer	In Tris saline, pH 7.3 (0.5% BSA, 0.02% sodium azide)

Storage Instruction

Store at -20°C.
Aliquot to avoid repeated freezing and thawing.

Note

This product contains sodium azide: a POISONOUS AND HAZARDOUS SUBSTANCE which should be handled by trained staff only.

Applications

- Western Blot (Tissue lysate)

Cd28 polyclonal antibody (Cat # PAB19641) (0.3 ug/mL) staining of mouse thymus lysate (35 ug protein in RIPA buffer). Primary incubation was 1 hour. Detected by chemiluminescence.

- Enzyme-linked Immunoabsorbent Assay

Gene Info — Cd28

Entrez GeneID[12487](#)**Protein Accession#**[NP_031668.3](#)**Gene Name**

Cd28

Gene Alias

-

Gene Description

CD28 antigen

Gene Ontology[Hyperlink](#)**Other Designations**

OTTMUSP00000002157