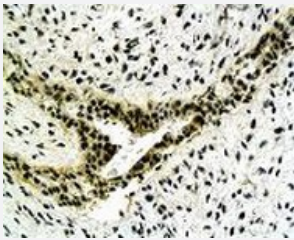


CYC1 polyclonal antibody

Catalog # PAB19560 Size 100 ug

Applications



Immunohistochemistry

Immunohistochemical staining of human gastric carcinoma tissue section with CYC1 polyclonal antibody (Cat # PAB19560) at 1:500 dilution. DAB chromogenic staining.

Specification

| | |
|----------------------------|--|
| Product Description | Rabbit polyclonal antibody raised against synthetic protein of CYC1. |
| Immunogen | Synthetic protein corresponding to human CYC1. |
| Host | Rabbit |
| Reactivity | Human, Mouse, Rat |
| Form | Lyophilized |
| Purification | Protein G purification |
| Recommend Usage | ELISA (1-2 ug/mL) Western Blot (2-10 ug/mL) Immunohistochemistry (2-10 ug/mL) The optimal working dilution should be determined by the end user. |
| Storage Buffer | Lyophilized from PBS. |
| Storage Instruction | Store at -20°C on dry atmosphere. After reconstitution with deionized water, store at 4°C for one month. For long term storage store at -20°C. Aliquot to avoid repeated freezing and thawing. |

Applications

- Western Blot

- Immunohistochemistry

Immunohistochemical staining of human gastric carcinoma tissue section with CYC1 polyclonal antibody (Cat # PAB19560) at 1:500 dilution. DAB chromogenic staining.

- Enzyme-linked Immunoabsorbent Assay

Gene Info — CYC1

| | |
|---------------|----------------------|
| Entrez GeneID | 1537 |
|---------------|----------------------|

| | |
|--------------------|------------------------|
| Protein Accession# | P08574 |
|--------------------|------------------------|

| | |
|-----------|------|
| Gene Name | CYC1 |
|-----------|------|

| | |
|------------|-------|
| Gene Alias | UQCR4 |
|------------|-------|

| | |
|------------------|----------------|
| Gene Description | cytochrome c-1 |
|------------------|----------------|

| | |
|---------|------------------------|
| Omim ID | 123980 |
|---------|------------------------|

| | |
|---------------|---------------------------|
| Gene Ontology | Hyperlink |
|---------------|---------------------------|

| | |
|--------------------|---|
| Other Designations | - |
|--------------------|---|

Pathway

- [Cardiac muscle contraction](#)
- [Metabolic pathways](#)
- [Oxidative phosphorylation](#)

Disease

- [Genetic Predisposition to Disease](#)

- [Ovarian Neoplasms](#)