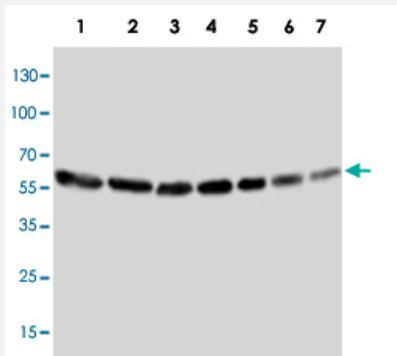


# ANXA6 polyclonal antibody

Catalog # PAB19522      Size 100 ug

## Applications

### Western Blot



Western blot analysis of tissue and cell extracts with ANXA6 polyclonal antibody (Cat # PAB19522).

Lane 1, rat ovarian tissue lysate.

Lane 2, rat liver tissue lysate.

Lane 3, A-549 whole cell lysate.

Lane 4, Jurkat whole cell lysate.

Lane 5, Raji whole cell lysate.

Lane 6, CEM whole cell lysate.

Lane 7, SMMC whole cell lysate.

## Specification

<b>Product Description</b>	Rabbit polyclonal antibody raised against synthetic peptide of ANXA6.
<b>Immunogen</b>	A synthetic peptide corresponding to amino acids at C-terminus of human ANXA6.
<b>Host</b>	Rabbit
<b>Reactivity</b>	Human, Mouse, Rat
<b>Specificity</b>	It identical to the related mouse and rat sequence.
<b>Form</b>	Lyophilized
<b>Purification</b>	Immunoaffinity purification
<b>Isotype</b>	IgG
<b>Recommend Usage</b>	Western Blot (1 ug/mL) The optimal working dilution should be determined by the end user.

Storage Buffer	Lyophilized from 0.9 mg NaCl, 0.2 mg Na <sub>2</sub> HPO <sub>4</sub> (5 mg BSA, 0.05 mg sodium azide, 0.05 mg Thimerosal)
Storage Instruction	Store at -20°C on dry atmosphere. After reconstitution with 200 uL of deionized water and concentration will be 500 ug/mL, store at -20°C or lower. Aliquot to avoid repeated freezing and thawing.
Note	This product contains sodium azide and thimerosal: POISONOUS AND HAZARDOUS SUBSTANCE which should be handled by trained staff only.

## Applications

- Western Blot

Western blot analysis of tissue and cell extracts with ANXA6 polyclonal antibody (Cat # PAB19522).

Lane 1, rat ovarian tissue lysate.

Lane 2, rat liver tissue lysate.

Lane 3, A-549 whole cell lysate.

Lane 4, Jurkat whole cell lysate.

Lane 5, Raji whole cell lysate.

Lane 6, CEM whole cell lysate.

Lane 7, SMMC whole cell lysate.

## Gene Info — ANXA6

Entrez GeneID	<a href="#">309</a>
Gene Name	ANXA6
Gene Alias	ANX6, CBP68
Gene Description	annexin A6
Omim ID	<a href="#">114070</a>
Gene Ontology	<a href="#">Hyperlink</a>

Gene Summary	Annexin VI belongs to a family of calcium-dependent membrane and phospholipid binding proteins. Although their functions are still not clearly defined, several members of the annexin family have been implicated in membrane-related events along exocytotic and endocytotic pathways. The annexin VI gene is approximately 60 kbp long and contains 26 exons. It encodes a protein of about 68 kDa that consists of eight 68-amino acid repeats separated by linking sequences of variable lengths. It is highly similar to human annexins I and II sequences, each of which contain four such repeats. Exon 21 of annexin VI is alternatively spliced, giving rise to two isoforms that differ by a 6-amino acid insertion at the start of the seventh repeat. Annexin VI has been implicated in mediating the endosome aggregation and vesicle fusion in secreting epithelia during exocytosis. [provided by RefSeq]
--------------	---

**Other Designations**

annexin VI|annexin VI (p68)|calcium-binding protein p68|calelectrin|calphobindin II

**Disease**

- [Femur Head Necrosis](#)
- [Genetic Predisposition to Disease](#)