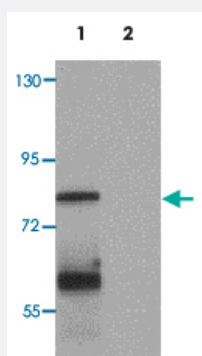


MSI2 polyclonal antibody

Catalog # PAB19416 Size 100 ug

Applications



Western Blot (Cell lysate)

Western blot analysis of MSI2 in EL4 cell lysate with MSI2 polyclonal antibody (Cat # PAB19416) at 1 ug/mL.



Immunocytochemistry

Immunocytochemical staining of EL4 cells with MSI2 polyclonal antibody (Cat # PAB19416) at 5 ug/mL.

Specification

Product Description	Rabbit polyclonal antibody raised against synthetic peptide of MSI2.
Immunogen	A synthetic peptide corresponding to 15 amino acids near N-terminus of human MSI2.
Host	Rabbit
Reactivity	Human, Mouse, Rat
Specificity	MSI2 antibody is predicted to not cross-react with MSI1. Multiple isoforms of MSI2 are known to exist.
Form	Liquid

Purification	Peptide affinity purification
Concentration	1 mg/mL
Recommend Usage	Western Blot (1 ug/mL) Immunocytochemistry (5 ug/mL) The optimal working dilution should be determined by the end user.
Storage Buffer	In PBS (0.02% sodium azide)
Storage Instruction	Store at 4°C for three months. For long term storage store at -20°C. Aliquot to avoid repeated freezing and thawing.
Note	This product contains sodium azide: a POISONOUS AND HAZARDOUS SUBSTANCE which should be handled by trained staff only.

Applications

- Western Blot (Cell lysate)

Western blot analysis of MSI2 in EL4 cell lysate with MSI2 polyclonal antibody (Cat # PAB19416) at 1 ug/mL.

- Immunocytochemistry

Immunocytochemical staining of EL4 cells with MSI2 polyclonal antibody (Cat # PAB19416) at 5 ug/mL.

- Enzyme-linked Immunoabsorbent Assay

Gene Info — MSI2

Entrez GeneID	124540
Protein Accession#	EAW94506
Gene Name	MSI2
Gene Alias	FLJ36569, MGC3245, MSI2H
Gene Description	musashi homolog 2 (Drosophila)
Omim ID	607897
Gene Ontology	Hyperlink

Gene Summary

This gene encodes a protein containing two conserved tandem RNA recognition motifs. Similar proteins in other species function as RNA-binding proteins and play central roles in posttranscriptional gene regulation. Two transcript variants encoding distinct isoforms have been identified for this gene. [provided by RefSeq]

Other Designations

musashi 2

Disease

- [Cardiovascular Diseases](#)
- [Diabetes Mellitus](#)
- [Edema](#)
- [Tobacco Use Disorder](#)