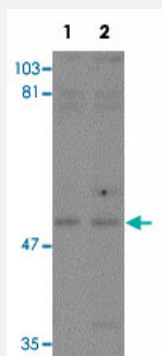


# KPNA3 polyclonal antibody

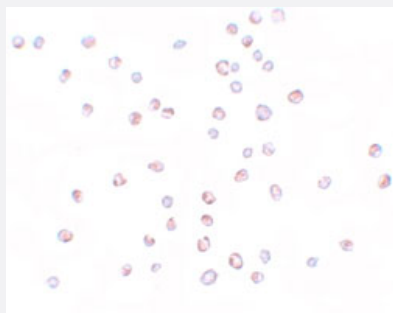
Catalog # PAB19316      Size 100 ug

## Applications



### Western Blot (Cell lysate)

Western blot analysis of KPNA3 in EL4 cell lysate with KPNA3 polyclonal antibody (Cat # PAB19316) at (1) 1 and (2) 2 ug/mL.



### Immunocytochemistry

Immunocytochemical staining of HeLa cells with KPNA3 polyclonal antibody (Cat # PAB19316) at 10 ug/mL.

## Specification

<b>Product Description</b>	Rabbit polyclonal antibody raised against synthetic peptide of KPNA3.
<b>Immunogen</b>	A synthetic peptide corresponding to 14 amino acids near C-terminus of human KPNA3.
<b>Host</b>	Rabbit
<b>Reactivity</b>	Human, Mouse, Rat
<b>Form</b>	Liquid
<b>Purification</b>	Peptide affinity purification

Concentration	1 mg/mL
Recommend Usage	Western Blot (1-2 ug/mL) Immunocytochemistry (10 ug/mL) The optimal working dilution should be determined by the end user.
Storage Buffer	In PBS (0.02% sodium azide)
Storage Instruction	Store at 4°C for three months. For long term storage store at -20°C. Aliquot to avoid repeated freezing and thawing.
Note	This product contains sodium azide: a POISONOUS AND HAZARDOUS SUBSTANCE which should be handled by trained staff only.

## Applications

- Western Blot (Cell lysate)

Western blot analysis of KPNA3 in EL4 cell lysate with KPNA3 polyclonal antibody (Cat # PAB19316) at (1) 1 and (2) 2 ug/mL.

- Immunocytochemistry

Immunocytochemical staining of HeLa cells with KPNA3 polyclonal antibody (Cat # PAB19316) at 10 ug/mL.

- Enzyme-linked Immunoabsorbent Assay

## Gene Info — KPNA3

Entrez GeneID	<a href="#">3839</a>
Protein Accession#	<a href="#">NP_002258</a>
Gene Name	KPNA3
Gene Alias	IPOA4, SRP1, SRP1gamma, SRP4, hSRP1
Gene Description	karyopherin alpha 3 (importin alpha 4)
Omim ID	<a href="#">601892</a>
Gene Ontology	<a href="#">Hyperlink</a>
Gene Summary	The transport of molecules between the nucleus and the cytoplasm in eukaryotic cells is mediated by the nuclear pore complex (NPC), which consists of 60-100 proteins. Small molecules (up to 70 kD) can pass through the nuclear pore by nonselective diffusion while larger molecules are transported by an active process. The protein encoded by this gene belongs to the importin alpha family, and is involved in nuclear protein import. [provided by RefSeq]

**Other Designations**

OTTHUMP00000018426|importin alpha 4|importin alpha-3|importin-alpha-Q2|karyopherin alpha 3

---

**Disease**

- [Genetic Predisposition to Disease](#)
- [Schizophrenia](#)