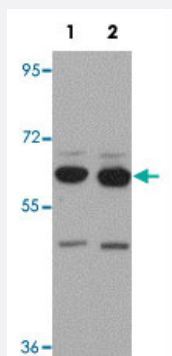


SH3RF2 polyclonal antibody

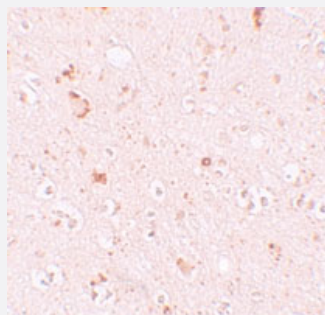
Catalog # PAB19296 Size 100 ug

Applications



Western Blot (Cell lysate)

Western blot analysis of SH3RF2 in NIH/3T3 cell lysate with SH3RF2 polyclonal antibody (Cat # PAB19296) at (1) 1 and (2) 2 ug/mL.



Immunohistochemistry

Immunohistochemical staining of human brain cells with SH3RF2 polyclonal antibody (Cat # PAB19296) at 10 ug/mL.

Specification

Product Description	Rabbit polyclonal antibody raised against synthetic peptide of SH3RF2.
Immunogen	A synthetic peptide corresponding to 17 amino acids near C-terminus of human SH3RF2.
Host	Rabbit
Reactivity	Human, Mouse, Rat
Form	Liquid
Purification	Peptide affinity purification

Concentration	1 mg/mL
Recommend Usage	Western Blot (1-2 ug/mL) Immunohistochemistry (10 ug/mL) The optimal working dilution should be determined by the end user.
Storage Buffer	In PBS (0.02% sodium azide)
Storage Instruction	Store at 4°C for three months. For long term storage store at -20°C. Aliquot to avoid repeated freezing and thawing.
Note	This product contains sodium azide: a POISONOUS AND HAZARDOUS SUBSTANCE which should be handled by trained staff only.

Applications

- Western Blot (Cell lysate)

Western blot analysis of SH3RF2 in NIH/3T3 cell lysate with SH3RF2 polyclonal antibody (Cat # PAB19296) at (1) 1 and (2) 2 ug/mL.

- Immunohistochemistry

Immunohistochemical staining of human brain cells with SH3RF2 polyclonal antibody (Cat # PAB19296) at 10 ug/mL.

- Enzyme-linked Immunoabsorbent Assay

Gene Info — SH3RF2

Entrez GeneID	153769
Protein Accession#	NP_689763
Gene Name	SH3RF2
Gene Alias	FLJ23654, MGC149788, MGC149789, MGC90410, RNF158
Gene Description	SH3 domain containing ring finger 2
Gene Ontology	Hyperlink
Other Designations	-

Disease

- [Tobacco Use Disorder](#)