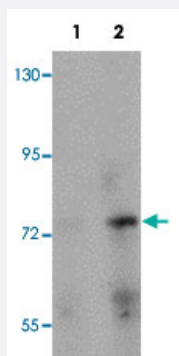


# PIAS2 polyclonal antibody

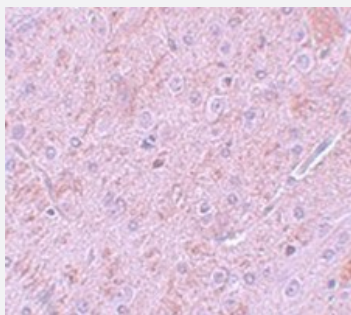
Catalog # PAB19243      Size 100 ug

## Applications



### Western Blot (Tissue lysate)

Western blot analysis of rat brain tissue with PIAS2 polyclonal antibody (Cat # PAB19243) at (Lane 1) 1 and (Lane 2) 2 ug/mL dilution.



### Immunohistochemistry

Immunohistochemical staining of rat brain tissue with PIAS2 polyclonal antibody (Cat # PAB19243) at 5 ug/mL dilution.

## Specification

<b>Product Description</b>	Rabbit polyclonal antibody raised against synthetic peptide of PIAS2.
<b>Immunogen</b>	A synthetic peptide corresponding to 18 amino acids near N-terminus of human PIAS2.
<b>Host</b>	Rabbit
<b>Reactivity</b>	Human, Mouse, Rat
<b>Form</b>	Liquid
<b>Purification</b>	Peptide affinity purification

Concentration	1 mg/mL
Recommend Usage	Western Blot (1-2 ug/mL) Immunohistochemistry (5 ug/mL) The optimal working dilution should be determined by the end user.
Storage Buffer	In PBS (0.02% sodium azide)
Storage Instruction	Store at 4°C for three months. For long term storage store at -20°C. Aliquot to avoid repeated freezing and thawing.
Note	This product contains sodium azide: a POISONOUS AND HAZARDOUS SUBSTANCE which should be handled by trained staff only.

## Applications

- Western Blot (Tissue lysate)

Western blot analysis of rat brain tissue with PIAS2 polyclonal antibody (Cat # PAB19243) at (Lane 1) 1 and (Lane 2) 2 ug/mL dilution.

- Immunohistochemistry

Immunohistochemical staining of rat brain tissue with PIAS2 polyclonal antibody (Cat # PAB19243) at 5 ug/mL dilution.

- Enzyme-linked Immunoabsorbent Assay

## Gene Info — PIAS2

Entrez GeneID	<a href="#">9063</a>
Protein Accession#	<a href="#">EAX01485</a>
Gene Name	PIAS2
Gene Alias	MGC102682, MIZ1, PIASX, PIASX-ALPHA, PIASX-BETA, SIZ2, ZMIZ4, miz
Gene Description	protein inhibitor of activated STAT, 2
Omim ID	<a href="#">603567</a>
Gene Ontology	<a href="#">Hyperlink</a>
Gene Summary	This gene encodes a protein involved in the regulation of transcription factors involved in MAP kinase signaling. The symbol MIZ1 has also been associated with ZBTB17 which is a different gene located on chromosome 1. Two alternatively spliced transcripts encoding different isoforms have been described. [provided by RefSeq]

**Other Designations**

Msx-interacting-zinc finger|protein inhibitor of activated STAT X|zinc finger, MIZ-type containing 4

**Pathway**

- [Jak-STAT signaling pathway](#)
- [Pathways in cancer](#)
- [Small cell lung cancer](#)
- [Ubiquitin mediated proteolysis](#)