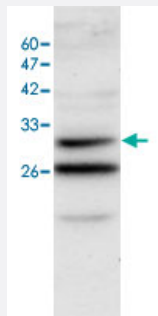


ANXA3 polyclonal antibody

Catalog # PAB19129 Size 100 uL

Applications



Western Blot (Cell lysate)

Western blot analysis of SW480 whole cell lysate with ANXA3 polyclonal antibody (Cat # PAB19129) at 1:500 dilution.

Specification

Product Description Rabbit polyclonal antibody raised against full length recombinant ANXA3.

Immunogen Recombinant protein corresponding to full length human ANXA3.

Host Rabbit

Reactivity Human

Specificity It can expression in BGC823 whole cell lysate.

Form Liquid

Recommend Usage Western blot (1:500)
The optimal working dilution should be determined by the end user.

Storage Buffer In serum

Storage Instruction Store at 4°C. For long term storage store at -20°C.
Aliquot to avoid repeated freezing and thawing.

Applications

- Western Blot (Cell lysate)

Western blot analysis of SW480 whole cell lysate with ANXA3 polyclonal antibody (Cat # PAB19129) at 1:500 dilution.

- Enzyme-linked Immunoabsorbent Assay

Gene Info — ANXA3

Entrez GeneID	306
---------------	---------------------

Protein Accession#	P12429
--------------------	------------------------

Gene Name	ANXA3
-----------	-------

Gene Alias	ANX3
------------	------

Gene Description	annexin A3
------------------	------------

Omim ID	106490
---------	------------------------

Gene Ontology	Hyperlink
---------------	---------------------------

Gene Summary	This gene encodes a member of the annexin family. Members of this calcium-dependent phospholipid-binding protein family play a role in the regulation of cellular growth and in signal transduction pathways. This protein functions in the inhibition of phospholipase A2 and cleavage of inositol 1,2-cyclic phosphate to form inositol 1-phosphate. This protein may also play a role in anti-coagulation. [provided by RefSeq]
--------------	--

Other Designations	Annexin III (lipocortin III) annexin III (lipocortin III, 1,2-cyclic-inositol-phosphate phosphodiesterase, placental anticoagulant protein III, calcimedlin 35-alpha) calcimedlin 35-alpha
--------------------	--