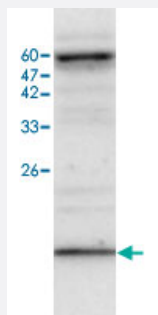


# MB polyclonal antibody

Catalog # PAB19124      Size 100 uL

## Applications



### Western Blot (Cell lysate)

Western blot analysis of HepG2 whole cell lysate with MB polyclonal antibody (Cat # PAB19124) at 1:500 dilution.

## Specification

**Product Description** Rabbit polyclonal antibody raised against full length recombinant MB.

**Immunogen** Recombinant protein corresponding to full length human MB.

**Host** Rabbit

**Reactivity** Human

**Specificity** It can expression in HepG2 whole cell lysate.

**Form** Liquid

**Recommend Usage** Western blot (1:500)  
The optimal working dilution should be determined by the end user.

**Storage Buffer** In serum

**Storage Instruction** Store at 4°C. For long term storage store at -20°C.  
Aliquot to avoid repeated freezing and thawing.

## Applications

- Western Blot (Cell lysate)

Western blot analysis of HepG2 whole cell lysate with MB polyclonal antibody (Cat # PAB19124) at 1:500 dilution.

- Enzyme-linked Immunoabsorbent Assay

## Gene Info — MB

|                    |  |
|--------------------|--|
| Entrez GeneID      | <a href="#">4151</a>   |
| Protein Accession# | <a href="#">P02144</a>   |
| Gene Name          | MB   |
| Gene Alias         | MGC13548, PVALB  |
| Gene Description   | myoglobin  |
| Omim ID            | <a href="#">160000</a>   |
| Gene Ontology      | <a href="#">Hyperlink</a>  |
| Gene Summary       | This gene encodes a member of the globin superfamily and is expressed in skeletal and cardiac muscles. The encoded protein is a haemoprotein contributing to intracellular oxygen storage and transcellular facilitated diffusion of oxygen. At least three alternatively spliced transcript variants encoding the same protein have been reported. [provided by RefSeq] |
| Other Designations | -  |