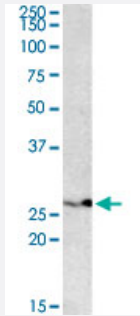


PSMB4 polyclonal antibody

Catalog # PAB19052 Size 100 ug

Applications



Western Blot (Cell lysate)

PSMB4 polyclonal antibody (Cat # PAB19052) (0.1 ug/mL) staining of HEK293 lysate (35 ug protein in RIPA buffer). Primary incubation was 1 hour. Detected by chemiluminescence.

Specification

Product Description	Goat polyclonal antibody raised against synthetic peptide of PSMB4.
Immunogen	A synthetic peptide corresponding to amino acids 230-239 at internal region of human PSMB4.
Sequence	C-NRFQIATVTE
Host	Goat
Theoretical MW (kDa)	25-26
Reactivity	Human
Form	Liquid
Purification	Antigen affinity purification
Concentration	0.5 mg/mL
Recommend Usage	ELISA (1:8000) Western Blot (0.1-0.3 ug/mL) The optimal working dilution should be determined by the end user.
Storage Buffer	In Tris saline, pH7.3 (0.5% BSA, 0.02% sodium azide)

Storage Instruction

Store at -20°C.
Aliquot to avoid repeated freezing and thawing.

Note

This product contains sodium azide: a POISONOUS AND HAZARDOUS SUBSTANCE which should be handled by trained staff only.

Applications

- Western Blot (Cell lysate)

PSMB4 polyclonal antibody (Cat # PAB19052) (0.1 ug/mL) staining of HEK293 lysate (35 ug protein in RIPA buffer). Primary incubation was 1 hour. Detected by chemiluminescence.

- Enzyme-linked Immunoabsorbent Assay

Gene Info — PSMB4

Entrez GeneID[5692](#)**Protein Accession#**[NP_002787.2](#)**Gene Name**

PSMB4

Gene Alias

HN3, HsN3, PROS26

Gene Description

proteasome (prosome, macropain) subunit, beta type, 4

Omim ID[602177](#)**Gene Ontology**[Hyperlink](#)**Gene Summary**

The proteasome is a multicatalytic proteinase complex with a highly ordered ring-shaped 20S core structure. The core structure is composed of 4 rings of 28 non-identical subunits; 2 rings are composed of 7 alpha subunits and 2 rings are composed of 7 beta subunits. Proteasomes are distributed throughout eukaryotic cells at a high concentration and cleave peptides in an ATP/ubiquitin-dependent process in a non-lysosomal pathway. An essential function of a modified proteasome, the immunoproteasome, is the processing of class I MHC peptides. This gene encodes a member of the proteasome B-type family, also known as the T1B family, that is a 20S core beta subunit. [provided by RefSeq]

Other Designations

macropain beta chain|multicatalytic endopeptidase complex beta chain|proteasome beta 4 subunit|proteasome beta chain|proteasome chain 3|proteasome subunit HsN3|proteasome subunit, beta type, 4

Pathway

- [Proteasome](#)

Disease

- [Cerebral Hemorrhage](#)
- [Depressive Disorder](#)
- [Genetic Predisposition to Disease](#)
- [Hypertension](#)
- [Inflammation](#)
- [Intracranial Hemorrhages](#)
- [Kidney Failure](#)
- [Stroke](#)
- [Subarachnoid Hemorrhage](#)
- [Tobacco Use Disorder](#)