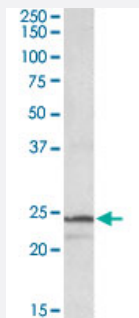


# PSMB3 polyclonal antibody

Catalog # PAB19047      Size 100 ug

## Applications



### Western Blot (Cell lysate)

PSMB3 polyclonal antibody (Cat # PAB19047) (1 ug/mL) staining of K-562 lysate (35 ug protein in RIPA buffer). Primary incubation was 1 hour. Detected by chemiluminescence.

## Specification

<b>Product Description</b>	Goat polyclonal antibody raised against synthetic peptide of PSMB3.
<b>Immunogen</b>	A synthetic peptide corresponding to amino acids at internal region of human PSMB3.
<b>Sequence</b>	C-NLYELKEGRQ
<b>Host</b>	Goat
<b>Theoretical MW (kDa)</b>	24
<b>Reactivity</b>	Human
<b>Form</b>	Liquid
<b>Purification</b>	Antigen affinity purification
<b>Concentration</b>	0.5 mg/mL
<b>Recommend Usage</b>	ELISA (1:16000) Western Blot (1-3 ug/mL) The optimal working dilution should be determined by the end user.
<b>Storage Buffer</b>	In Tris saline, pH7.3 (0.5% BSA, 0.02% sodium azide)

**Storage Instruction**

Store at -20°C.  
Aliquot to avoid repeated freezing and thawing.

**Note**

This product contains sodium azide: a POISONOUS AND HAZARDOUS SUBSTANCE which should be handled by trained staff only.

## Applications

- Western Blot (Cell lysate)

PSMB3 polyclonal antibody (Cat # PAB19047) (1 ug/mL) staining of K-562 lysate (35 ug protein in RIPA buffer). Primary incubation was 1 hour. Detected by chemiluminescence.

- Enzyme-linked Immunoabsorbent Assay

## Gene Info — PSMB3

**Entrez GeneID**[5691](#)**Protein Accession#**[NP\\_002786.2](#)**Gene Name**

PSMB3

**Gene Alias**

HC10-II, MGC4147

**Gene Description**

proteasome (prosome, macropain) subunit, beta type, 3

**Omim ID**[602176](#)**Gene Ontology**[Hyperlink](#)**Gene Summary**

The proteasome is a multicatalytic proteinase complex with a highly ordered ring-shaped 20S core structure. The core structure is composed of 4 rings of 28 non-identical subunits; 2 rings are composed of 7 alpha subunits and 2 rings are composed of 7 beta subunits. Proteasomes are distributed throughout eukaryotic cells at a high concentration and cleave peptides in an ATP/ubiquitin-dependent process in a non-lysosomal pathway. An essential function of a modified proteasome, the immunoproteasome, is the processing of class I MHC peptides. This gene encodes a member of the proteasome B-type family, also known as the T1B family, that is a 20S core beta subunit. Pseudogenes have been identified on chromosomes 2 and 12. [provided by RefSeq]

**Other Designations**

proteasome beta 3 subunit|proteasome chain 13|proteasome component C10-II|proteasome theta chain

## Pathway

- [Proteasome](#)