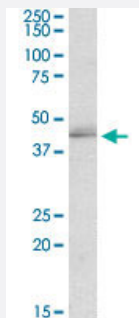


TIAL1 polyclonal antibody

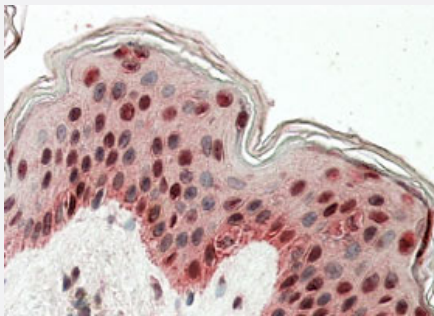
Catalog # PAB19020 Size 100 ug

Applications



Western Blot (Cell lysate)

TIAL1 polyclonal antibody (Cat # PAB19020) (2 ug/mL) staining of K-562 lysate (35 ug protein in RIPA buffer). Primary incubation was 1 hour. Detected by chemiluminescence.



Immunohistochemistry (Formalin/PFA-fixed paraffin-embedded sections)

Immunohistochemical staining of human skin with TIAL1 polyclonal antibody (Cat # PAB19020) (3.8 ug/mL). Steamed antigen retrieval with citrate buffer pH 6, AP-staining.

Specification

Product Description	Goat polyclonal antibody raised against synthetic peptide of TIAL1.
Immunogen	A synthetic peptide corresponding to amino acids at internal region of human TIAL1.
Sequence	C-SPEITTEDIKSAFAP
Host	Goat
Theoretical MW (kDa)	45
Reactivity	Human
Form	Liquid

Purification	Antigen affinity purification
Concentration	0.5 mg/mL
Recommend Usage	Immunohistochemistry (Formalin/PFA-fixed paraffin-embedded sections)(3-5 ug/mL) ELISA (1:64000) Western Blot (1-3 ug/mL) The optimal working dilution should be determined by the end user.
Storage Buffer	In Tris saline, pH7.3 (0.5% BSA, 0.02% sodium azide)
Storage Instruction	Store at -20°C. Aliquot to avoid repeated freezing and thawing.
Note	This product contains sodium azide: a POISONOUS AND HAZARDOUS SUBSTANCE which should be handled by trained staff only.

Applications

- Western Blot (Cell lysate)

TIAL1 polyclonal antibody (Cat # PAB19020) (2 ug/mL) staining of K-562 lysate (35 ug protein in RIPA buffer). Primary incubation was 1 hour. Detected by chemiluminescence.

- Immunohistochemistry (Formalin/PFA-fixed paraffin-embedded sections)

Immunohistochemical staining of human skin with TIAL1 polyclonal antibody (Cat # PAB19020) (3.8 ug/mL). Steamed antigen retrieval with citrate buffer pH 6, AP-staining.

- Enzyme-linked Immunoabsorbent Assay

Gene Info — TIA1

Entrez GeneID	7072
Protein Accession#	NP_003243.1 (Gene ID : 7073);NP_001029097.1 (Gene ID : 7073)
Gene Name	TIA1
Gene Alias	-
Gene Description	TIA1 cytotoxic granule-associated RNA binding protein
Omim ID	603518
Gene Ontology	Hyperlink

Gene Summary

The product encoded by this gene is a member of a RNA-binding protein family and possesses nucleolytic activity against cytotoxic lymphocyte (CTL) target cells. It has been suggested that this protein may be involved in the induction of apoptosis as it preferentially recognizes poly(A) homopolymers and induces DNA fragmentation in CTL targets. The major granule-associated species is a 15-kDa protein that is thought to be derived from the carboxyl terminus of the 40-kDa product by proteolytic processing. Alternative splicing resulting in different isoforms of this gene product has been described in the literature. [provided by RefSeq]

Other Designations

T-cell-restricted intracellular antigen-1|TIA1 cytotoxic granule-associated RNA-binding protein|TIA1 protein|cytotoxic granule-associated RNA-binding protein|nucleolysin TIA-1 isoform p40|p40-TIA-1 (containing p15-TIA-1)

Gene Info — TIAL1

Entrez GeneID

[7073](#)

Protein Accession#

[NP_003243.1 \(Gene ID : 7073\)](#); [NP_001029097.1 \(Gene ID : 7073\)](#)

Gene Name

TIAL1

Gene Alias

MGC33401, TCBP, TIAR

Gene Description

TIA1 cytotoxic granule-associated RNA binding protein-like 1

Omim ID

[603413](#)

Gene Ontology

[Hyperlink](#)

Gene Summary

The protein encoded by this gene is a member of a family of RNA-binding proteins, has three RNA recognition motifs (RRMs), and binds adenine and uridine-rich elements in mRNA and pre-mRNAs of a wide range of genes. It regulates various activities including translational control, splicing and apoptosis. Alternate transcriptional splice variants, encoding different isoforms, have been characterized. The different isoforms have been shown to function differently with respect to post-transcriptional silencing. [provided by RefSeq]

Other Designations

OTTHUMP00000020602|OTTHUMP00000020605|T-cluster binding protein|TIA-1 related protein|TIA-1-related nucleolysin|TIA1 cytotoxic granule-associated RNA-binding protein-like 1|aging-associated gene 7 protein