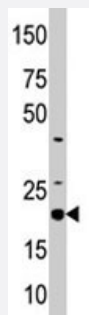


# SKP1 polyclonal antibody

Catalog # PAB1898

Size 400 uL

## Applications



### Western Blot (Cell lysate)

Western blot analysis of SKP1 polyclonal antibody (Cat # PAB1898) in CEM cell line lysate (35 ug/lane). SKP1 (arrow) was detected using the purified polyclonal antibody.

## Specification

<b>Product Description</b>	Rabbit polyclonal antibody raised against synthetic peptide of SKP1.
<b>Immunogen</b>	A synthetic peptide (conjugated with KLH) corresponding to internal region of human SKP1.
<b>Host</b>	Rabbit
<b>Reactivity</b>	Human
<b>Form</b>	Liquid
<b>Purification</b>	Protein G purification
<b>Recommend Usage</b>	Western Blot (1:1000) The optimal working dilution should be determined by the end user.
<b>Storage Buffer</b>	In PBS (0.09% sodium azide)
<b>Storage Instruction</b>	Store at 4°C. For long term storage store at -20°C. Aliquot to avoid repeated freezing and thawing.
<b>Note</b>	This product contains sodium azide: a POISONOUS AND HAZARDOUS SUBSTANCE which should be handled by trained staff only.

## Applications

- Western Blot (Cell lysate)

Western blot analysis of SKP1 polyclonal antibody (Cat # PAB1898) in CEM cell line lysate (35 ug/lane). SKP1 (arrow) was detected using the purified polyclonal antibody.

## Gene Info — SKP1

Entrez GeneID	<a href="#">6500</a>
Protein Accession#	<a href="#">NP_008861;P63208</a>
Gene Name	SKP1
Gene Alias	EMC19, MGC34403, OCP-II, OCP2, SKP1A, TCEB1L, p19A
Gene Description	S-phase kinase-associated protein 1
Omim ID	<a href="#">601434</a>
Gene Ontology	<a href="#">Hyperlink</a>
Gene Summary	This gene encodes a component of SCF complexes, which are composed of this protein, cullin 1, a ring-box protein, and one member of the F-box family of proteins. This protein binds directly to the F-box motif found in F-box proteins. SCF complexes are involved in the regulated ubiquitination of specific protein substrates, which targets them for degradation by the proteasome. Specific F-box proteins recognize different target protein(s), and many specific SCF substrates have been identified including regulators of cell cycle progression and development. Studies have also characterized the protein as an RNA polymerase II elongation factor. Alternative splicing of this gene results in two transcript variants. A related pseudogene has been identified on chromosome 7. [provided by RefSeq]
Other Designations	RNA polymerase II elongation factor-like protein OCP2 cyclin A/CDK2-associated p19 organ of Corti protein 2 transcription elongation factor B (SIII), polypeptide 1-like

## Publication Reference

- [Structure of a beta-TrCP1-Skp1-beta-catenin complex: destruction motif binding and lysine specificity of the SCF\(beta-TrCP1\) ubiquitin ligase.](#)

Wu G, Xu G, Schulman BA, Jeffrey PD, Harper JW, Pavletich NP.

Molecular Cell 2003 Jun; 11(6):1445.

- [Siah-1, SIP, and Ebi collaborate in a novel pathway for beta-catenin degradation linked to p53 responses.](#)

Matsuzawa SI, Reed JC.

Molecular Cell 2001 May; 7(5):915.

Application: WB-Ce, WB-Tr, Human, HEK 293T, MCF-7 cells

## Pathway

- [Cell cycle](#)
- [TGF-beta signaling pathway](#)
- [Ubiquitin mediated proteolysis](#)
- [Wnt signaling pathway](#)

## Disease

- [Tobacco Use Disorder](#)