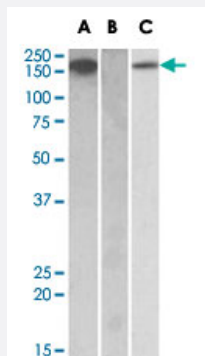


CSF1R polyclonal antibody

Catalog # PAB18945 Size 100 ug

Applications



Western Blot (Transfected lysate)

HEK293 lysate (10ug protein in RIPA buffer) overexpressing human CSF1R with C-terminal MYC tag probed with CSF1R polyclonal antibody (Cat # PAB18945, 1 ug/mL) in Lane A and probed with anti-MYC Tag (1/1000) in lane C.

Mock-transfected HEK293 probed with CSF1R polyclonal antibody (Cat # PAB18945) (1 mg/mL) in Lane B.

Primary incubations were for 1 hour. Detected by chemiluminescence.

Specification

Product Description	Goat polyclonal antibody raised against synthetic peptide of CSF1R.
Immunogen	A synthetic peptide corresponding to amino acids at internal region of human CSF1R.
Sequence	C-NDSFSEQDLDK
Host	Goat
Theoretical MW (kDa)	200
Reactivity	Human
Form	Liquid
Purification	Antigen affinity purification
Concentration	0.5 mg/mL
Recommend Usage	ELISA (1:8000) Western Blot (0.2-1 ug/mL) The optimal working dilution should be determined by the end user.

Storage Buffer	In 0.5 mg/mL in Tris saline, pH7.3 (0.5% BSA, 0.02% sodium azide)
Storage Instruction	Store at -20°C. Aliquot to avoid repeated freezing and thawing.
Note	This product contains sodium azide: a POISONOUS AND HAZARDOUS SUBSTANCE which should be handled by trained staff only.

Applications

- Western Blot (Transfected lysate)

HEK293 lysate (10ug protein in RIPA buffer) overexpressing human CSF1R with C-terminal MYC tag probed with CSF1R polyclonal antibody (Cat # PAB18945, 1 ug/mL) in Lane A and probed with anti-MYC Tag (1/1000) in lane C. Mock-transfected HEK293 probed with CSF1R polyclonal antibody (Cat # PAB18945) (1 mg/mL) in Lane B. Primary incubations were for 1 hour. Detected by chemiluminescence.

- Enzyme-linked Immunoabsorbent Assay

Gene Info — CSF1R

Entrez GeneID	1436
Protein Accession#	NP_005202.2
Gene Name	CSF1R
Gene Alias	C-FMS, CD115, CSFR, FIM2, FMS
Gene Description	colony stimulating factor 1 receptor
Omim ID	164770
Gene Ontology	Hyperlink

Gene Summary	The protein encoded by this gene is the receptor for colony stimulating factor 1, a cytokine which controls the production, differentiation, and function of macrophages. This receptor mediates most if not all of the biological effects of this cytokine. Ligand binding activates the receptor kinase through a process of oligomerization and transphosphorylation. The encoded protein is a tyrosine kinase transmembrane receptor and member of the CSF1/PDGF receptor family of tyrosine-protein kinases. Mutations in this gene have been associated with a predisposition to myeloid malignancy. The first intron of this gene contains a transcriptionally inactive ribosomal protein L7 processed pseudogene oriented in the opposite direction. [provided by RefSeq]
---------------------	---

Other Designations	CD115 antigen FMS proto-oncogene McDonough feline sarcoma viral (v-fms) oncogene homolog macrophage colony stimulating factor I receptor soluble CSF1R variant 1
---------------------------	--

Pathway

- [Cytokine-cytokine receptor interaction](#)
- [Endocytosis](#)
- [Hematopoietic cell lineage](#)
- [Pathways in cancer](#)

Disease

- [Asthma](#)
- [Genetic Predisposition to Disease](#)
- [Heart Defects](#)
- [Lung Neoplasms](#)
- [Myelodysplastic Syndromes](#)
- [Pancreatic cancer](#)
- [Pancreatic Neoplasms](#)
- [Pulmonary Disease](#)
- [Purpura](#)
- [Tobacco Use Disorder](#)
- [Urinary Bladder Neoplasms](#)
- [Werner syndrome](#)