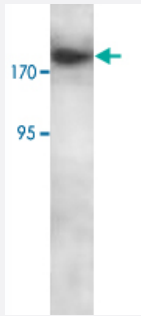


# RBBP6 polyclonal antibody

Catalog # PAB18894      Size 100 ug

## Applications



### Western Blot (Cell lysate)

Western blot analysis of Jurkat cell lysate with RBBP6 polyclonal antibody (Cat # PAB18894) at 1 : 250 dilution.

## Specification

<b>Product Description</b>	Rabbit polyclonal antibody raised against synthetic peptide of RBBP6.
<b>Immunogen</b>	A synthetic peptide corresponding to 14 amino acids at C-terminus of human RBBP6.
<b>Host</b>	Rabbit
<b>Reactivity</b>	Human
<b>Form</b>	Liquid
<b>Recommend Usage</b>	ELISA (1:20000-1:80000) Western Blot (1:200-1:500) The optimal working dilution should be determined by the end user.
<b>Storage Buffer</b>	In buffer containing 0.02% sodium azide
<b>Storage Instruction</b>	Store at 4°C for three months. For long term storage store at -20°C. Aliquot to avoid repeated freezing and thawing.
<b>Note</b>	This product contains sodium azide: a POISONOUS AND HAZARDOUS SUBSTANCE which should be handled by trained staff only.

## Applications

- Western Blot (Cell lysate)

Western blot analysis of Jurkat cell lysate with RBBP6 polyclonal antibody (Cat # PAB18894) at 1 : 250 dilution.

- Enzyme-linked Immunoabsorbent Assay

## Gene Info — RBBP6

**Entrez GeneID** [5930](#)

**Protein Accession#** [NM\\_006910](#)

**Gene Name** RBBP6

**Gene Alias** DKFZp686P0638, DKFZp761B2423, MY038, P2P-R, PACT, RBQ-1, SNAMA

**Gene Description** retinoblastoma binding protein 6

**Omim ID** [600938](#)

**Gene Ontology** [Hyperlink](#)

**Gene Summary** The retinoblastoma tumor suppressor (pRB) protein binds with many other proteins. In various human cancers, pRB suppresses cellular proliferation and is inactivated. Cell cycle-dependent phosphorylation regulates the activity of pRB. This gene encodes a protein which binds to underphosphorylated but not phosphorylated pRB. Multiple alternatively spliced transcript variants that encode different isoforms have been found for this gene. [provided by RefSeq]

**Other Designations** RB-binding Q-protein 1|proliferation potential-related protein|retinoblastoma-binding protein 6|retinoblastoma-binding protein 6, isoform 3