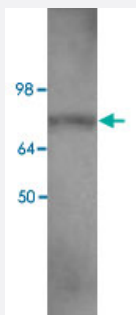


EIF2C2 polyclonal antibody

Catalog # PAB18863 Size 200 uL

Applications



Western Blot (Cell lysate)

Western blot analysis of HEK293 cell lysate with EIF2C2 polyclonal antibody (Cat # PAB18863) at 1 : 400 dilution.

Specification

Product Description	Rabbit polyclonal antibody raised against synthetic peptide of EIF2C2.
Immunogen	A synthetic peptide corresponding to 14 amino acids at C-terminus of human EIF2C2.
Host	Rabbit
Reactivity	Human, Mouse, Rat
Form	Liquid
Purification	Protein A purification
Recommend Usage	ELISA (1:80000) Western Blot (1:200-1:1000) The optimal working dilution should be determined by the end user.
Storage Buffer	In buffer (0.02% sodium azide).
Storage Instruction	Store at -20°C. Aliquot to avoid repeated freezing and thawing.
Note	This product contains sodium azide: a POISONOUS AND HAZARDOUS SUBSTANCE which should be handled by trained staff only.

Applications

- Western Blot (Cell lysate)

Western blot analysis of HEK293 cell lysate with EIF2C2 polyclonal antibody (Cat # PAB18863) at 1 : 400 dilution.

- Enzyme-linked Immunoabsorbent Assay

Gene Info — EIF2C2

Entrez GeneID [27161](#)

Protein Accession# [NM_012154](#)

Gene Name EIF2C2

Gene Alias AGO2, MGC3183, Q10

Gene Description eukaryotic translation initiation factor 2C, 2

Omim ID [606229](#)

Gene Ontology [Hyperlink](#)

Gene Summary This gene encodes a member of the Argonaute family of proteins which play a role in RNA interference. The encoded protein is highly basic, and contains a PAZ domain and a PIWI domain. It may interact with dicer1 and play a role in short-interfering-RNA-mediated gene silencing. Multiple transcript variants encoding different isoforms have been found for this gene. [provided by RefSeq]

Other Designations argonaute 2

Disease

- [Adenocarcinoma](#)
- [Carcinoma](#)
- [Esophageal Neoplasms](#)
- [Genetic Predisposition to Disease](#)
- [Kidney Neoplasms](#)

- [Lung Neoplasms](#)
- [Mouth Neoplasms](#)
- [Precancerous Conditions](#)