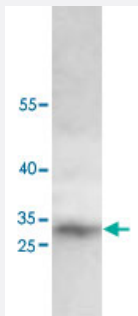


# CNN1 polyclonal antibody

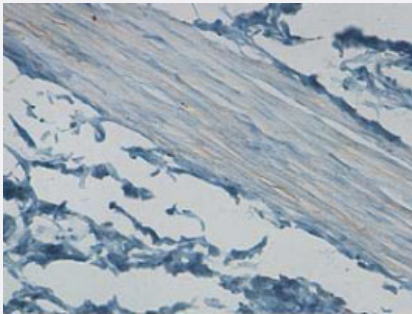
Catalog # PAB18808      Size 100 ug

## Applications



### Western Blot (Tissue lysate)

Western blot analysis of human fetal stomach lysate with CNN1 polyclonal antibody (Cat # PAB18808) at 1 : 1000 dilution.



### Immunohistochemistry (Formalin/PFA-fixed paraffin-embedded sections)

Immunohistochemical staining of formalin-fixed paraffin-embedded human stomach tissue showing cytoplasmic staining with CNN1 polyclonal antibody (Cat # PAB18808) at 1 : 100 dilution.

## Specification

<b>Product Description</b>	Rabbit polyclonal antibody raised against synthetic peptide of CNN1.
<b>Immunogen</b>	A synthetic peptide corresponding to amino acids 150-250 of human CNN1.
<b>Host</b>	Rabbit
<b>Reactivity</b>	Human
<b>Form</b>	Liquid
<b>Purification</b>	Peptide affinity purification

<b>Recommend Usage</b>	ELISA (1:1000-1:10000) Western Blot (1:500-1:1000) Immunohistochemistry (1:50-1:500) The optimal working dilution should be determined by the end user.
<b>Storage Buffer</b>	In buffer containing 0.02% sodium azide
<b>Storage Instruction</b>	Store at 4°C for three months. For long term storage store at -20°C. Aliquot to avoid repeated freezing and thawing.
<b>Note</b>	This product contains sodium azide: a POISONOUS AND HAZARDOUS SUBSTANCE which should be handled by trained staff only.

## Applications

- Western Blot (Tissue lysate)

Western blot analysis of human fetal stomach lysate with CNN1 polyclonal antibody (Cat # PAB18808) at 1 : 1000 dilution.

- Immunohistochemistry (Formalin/PFA-fixed paraffin-embedded sections)

Immunohistochemical staining of formalin-fixed paraffin-embedded human stomach tissue showing cytoplasmic staining with CNN1 polyclonal antibody (Cat # PAB18808) at 1 : 100 dilution.

- Enzyme-linked Immunoabsorbent Assay

## Gene Info — CNN1

<b>Entrez GeneID</b>	<a href="#">1264</a>
<b>Gene Name</b>	CNN1
<b>Gene Alias</b>	SMCC, Sm-Calp
<b>Gene Description</b>	calponin 1, basic, smooth muscle
<b>Omim ID</b>	<a href="#">600806</a>
<b>Gene Ontology</b>	<a href="#">Hyperlink</a>
<b>Gene Summary</b>	basic
<b>Other Designations</b>	calponins, basic

## Disease

- [Cardiovascular Diseases](#)
- [Diabetes Mellitus](#)
- [Edema](#)