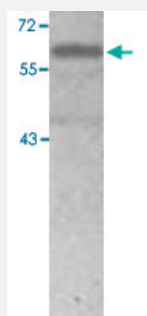


RIPK2 polyclonal antibody

Catalog # PAB18782 Size 100 ug

Applications



Western Blot (Cell lysate)

Western blot analysis of HEK293 cell lysate with RIPK2 polyclonal antibody (Cat # PAB18782) at 1 : 500 dilution.

Specification

Product Description	Rabbit polyclonal antibody raised against synthetic peptide of RIPK2.
Immunogen	A synthetic peptide corresponding to 15 amino acids at C-terminus of human RIPK2.
Host	Rabbit
Reactivity	Human
Form	Liquid
Recommend Usage	ELISA (1:40000-1:80000) Western Blot (1:200-1:500) The optimal working dilution should be determined by the end user.
Storage Buffer	In buffer containing 0.02% sodium azide
Storage Instruction	Store at 4°C for three months. For long term storage store at -20°C. Aliquot to avoid repeated freezing and thawing.
Note	This product contains sodium azide: a POISONOUS AND HAZARDOUS SUBSTANCE which should be handled by trained staff only.

Applications

- Western Blot (Cell lysate)

Western blot analysis of HEK293 cell lysate with RIPK2 polyclonal antibody (Cat # PAB18782) at 1 : 500 dilution.

- Enzyme-linked Immunoabsorbent Assay

Gene Info — RIPK2

Entrez GeneID	8767
Protein Accession#	O43353
Gene Name	RIPK2
Gene Alias	CARD3, CARDIAK, CCK, GIG30, RICK, RIP2
Gene Description	receptor-interacting serine-threonine kinase 2
Omim ID	603455
Gene Ontology	Hyperlink
Gene Summary	This gene encodes a member of the receptor-interacting protein (RIP) family of serine/threonine protein kinases. The encoded protein contains a C-terminal caspase activation and recruitment domain (CARD), and is a component of signaling complexes in both the innate and adaptive immune pathways. It is a potent activator of NF-kappaB and inducer of apoptosis in response to various stimuli. [provided by RefSeq]
Other Designations	CARD-carrying kinase CARD-containing interleukin-1 beta-converting enzyme (ICE)-associated kinase growth-inhibiting gene 30 receptor interacting protein 2 receptor-interacting protein (RIP)-like interacting caspase-like apoptosis regulatory protein (CLARP)

Pathway

- [Neurotrophin signaling pathway](#)

Disease

- [Genetic Predisposition to Disease](#)
- [Hematologic Diseases](#)

- [Hodgkin Disease](#)
- [Leprosy](#)
- [Lymphoma](#)
- [Lymphoproliferative Disorders](#)
- [Occupational Diseases](#)
- [Waldenstrom Macroglobulinemia](#)
- [Werner syndrome](#)