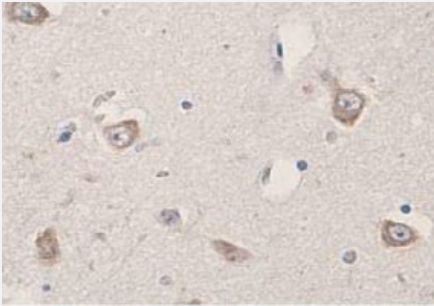


# RIPK2 polyclonal antibody

Catalog # PAB18781      Size 100 ug

## Applications



### Immunohistochemistry (Formalin/PFA-fixed paraffin-embedded sections)

Immunohistochemical staining of formalin-fixed paraffin-embedded human brain tissue showing cytoplasmic staining with RIPK2 polyclonal antibody (Cat # PAB18781) at 1 : 200 dilution.

## Specification

<b>Product Description</b>	Rabbit polyclonal antibody raised against synthetic peptide of RIPK2.
<b>Immunogen</b>	A synthetic peptide corresponding to 15 amino acids at C-terminus of human RIPK2.
<b>Host</b>	Rabbit
<b>Reactivity</b>	Human
<b>Form</b>	Liquid
<b>Purification</b>	Peptide affinity purification
<b>Recommend Usage</b>	ELISA (1:40000-1:80000) Immunohistochemistry (1:100-1:500) The optimal working dilution should be determined by the end user.
<b>Storage Buffer</b>	In buffer containing 0.02% sodium azide
<b>Storage Instruction</b>	Store at 4°C for three months. For long term storage store at -20°C. Aliquot to avoid repeated freezing and thawing.
<b>Note</b>	This product contains sodium azide: a POISONOUS AND HAZARDOUS SUBSTANCE which should be handled by trained staff only.

## Applications

- Immunohistochemistry (Formalin/PFA-fixed paraffin-embedded sections)

Immunohistochemical staining of formalin-fixed paraffin-embedded human brain tissue showing cytoplasmic staining with RIPK2 polyclonal antibody (Cat # PAB18781) at 1 : 200 dilution.

- Enzyme-linked Immunoabsorbent Assay

## Gene Info — RIPK2

Entrez GeneID	<a href="#">8767</a>
Gene Name	RIPK2
Gene Alias	CARD3, CARDIAK, CCK, GIG30, RICK, RIP2
Gene Description	receptor-interacting serine-threonine kinase 2
Omim ID	<a href="#">603455</a>
Gene Ontology	<a href="#">Hyperlink</a>
Gene Summary	This gene encodes a member of the receptor-interacting protein (RIP) family of serine/threonine protein kinases. The encoded protein contains a C-terminal caspase activation and recruitment domain (CARD), and is a component of signaling complexes in both the innate and adaptive immune pathways. It is a potent activator of NF-kappaB and inducer of apoptosis in response to various stimuli. [provided by RefSeq]
Other Designations	CARD-carrying kinase CARD-containing interleukin-1 beta-converting enzyme (ICE)-associated kinase growth-inhibiting gene 30 receptor interacting protein 2 receptor-interacting protein (RIP)-like interacting caspase-like apoptosis regulatory protein (CLARP)

## Pathway

- [Neurotrophin signaling pathway](#)

## Disease

- [Genetic Predisposition to Disease](#)
- [Hematologic Diseases](#)

- [Hodgkin Disease](#)
- [Leprosy](#)
- [Lymphoma](#)
- [Lymphoproliferative Disorders](#)
- [Occupational Diseases](#)
- [Waldenstrom Macroglobulinemia](#)
- [Werner syndrome](#)