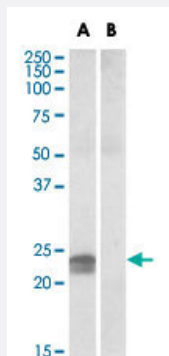


HMGA1 polyclonal antibody

Catalog # PAB18722

Size 100 ug

Applications



Western Blot (Tissue lysate)

HMGA1 polyclonal antibody (Cat # PAB18722) (0.5 ug/mL) staining of human pancreas lysate (35 ug protein in RIPA buffer) with (B) and without (A) blocking with the immunising peptide. Primary incubation was 1 hour. Detected by chemiluminescence.

Specification

Product Description	Goat polyclonal antibody raised against synthetic peptide of HMGA1.
Immunogen	A synthetic peptide corresponding to amino acids 9-21 near N-terminus of human HMGA1.
Sequence	C-SQPLASKQEKGDT
Host	Goat
Theoretical MW (kDa)	24
Reactivity	Human
Specificity	This antibody is expected to recognize reported isoforms a (NP_665906.1, NP_665908.1, NP_665911.1) and b (NP_002122.1, NP_665910.1, NP_665912.1). This antibody is not expected to cross-react with HMGA2.
Form	Liquid
Purification	Antigen affinity purification
Concentration	0.5 mg/mL

Recommend Usage	ELISA (1:16000) Western Blot (0.5-1 ug/mL) The optimal working dilution should be determined by the end user.
Storage Buffer	In Tris saline, pH 7.3 (0.02% sodium azide, 0.5% BSA)
Storage Instruction	Store at -20°C. Aliquot to avoid repeated freezing and thawing.
Note	This product contains sodium azide: a POISONOUS AND HAZARDOUS SUBSTANCE which should be handled by trained staff only.

Applications

- Western Blot (Tissue lysate)

HMGA1 polyclonal antibody (Cat # PAB18722) (0.5 ug/mL) staining of human pancreas lysate (35 ug protein in RIPA buffer) with (B) and without (A) blocking with the immunising peptide. Primary incubation was 1 hour. Detected by chemiluminescence.

- Enzyme-linked Immunoabsorbent Assay

Gene Info — HMGA1

Entrez GeneID	3159
Protein Accession#	NP_665906.1;NP_002122.1
Gene Name	HMGA1
Gene Alias	HMG-R, HMGA1A, HMGIY, MGC12816, MGC4242, MGC4854
Gene Description	high mobility group AT-hook 1
Omim ID	600701
Gene Ontology	Hyperlink

Gene Summary	This gene encodes a non-histone protein involved in many cellular processes, including regulation of inducible gene transcription, integration of retroviruses into chromosomes, and the metastatic progression of cancer cells. The encoded protein preferentially binds to the minor groove of A+T-rich regions in double-stranded DNA. It has little secondary structure in solution but assumes distinct conformations when bound to substrates such as DNA or other proteins. The encoded protein is frequently acetylated and is found in the nucleus. At least seven transcript variants encoding two different isoforms have been found for this gene. [provided by RefSeq]
---------------------	---

Other Designations

OTTHUMP00000016222|OTTHUMP00000016223|OTTHUMP00000016224|OTTHUMP00000039618|high-mobility group (nonhistone chromosomal) protein isoforms I and Y|nonhistone chromosomal high-mobility group protein HMG-I/HMG-Y

Disease

- [Cardiovascular Diseases](#)
- [Diabetes Mellitus](#)
- [Edema](#)
- [Tobacco Use Disorder](#)