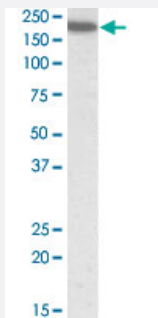


ITGAL polyclonal antibody

Catalog # PAB18711

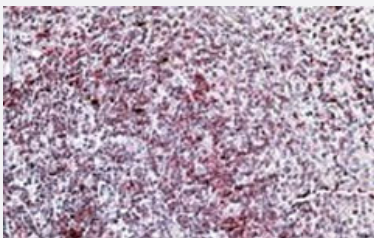
Size 100 ug

Applications



Western Blot (Tissue lysate)

ITGAL polyclonal antibody (Cat # PAB18711) (0.5 ug/mL) staining of human spleen lysate (35 ug protein in RIPA buffer). Primary incubation was 1 hour. Detected by chemiluminescence.



Immunohistochemistry (Formalin/PFA-fixed paraffin-embedded sections)

ITGAL polyclonal antibody (Cat # PAB18711) (3.8 ug/mL) staining of paraffin embedded human spleen. Steamed antigen retrieval with citrate buffer pH 6, AP-staining.

Specification

Product Description	Goat polyclonal antibody raised against synthetic peptide of ITGAL.
Immunogen	A synthetic peptide corresponding to internal region of human ITGAL.
Sequence	C-YQVRIQPSIHDHN
Host	Goat
Theoretical MW (kDa)	129
Reactivity	Human
Specificity	This antibody is expected to recognize both reported isoforms (NP_002200.2; NP_001107852.1).

Form	Liquid
Purification	Antigen affinity purification
Concentration	0.5 mg/mL
Recommend Usage	ELISA (1:16000) Western Blot (0.5-2 ug/mL) Immunohistochemistry (Formalin/PFA-fixed paraffin-embedded sections) (4-6 ug/mL) The optimal working dilution should be determined by the end user.
Storage Buffer	In Tris saline, pH 7.3 (0.02% sodium azide, 0.5% BSA)
Storage Instruction	Store at -20°C. Aliquot to avoid repeated freezing and thawing.
Note	This product contains sodium azide: a POISONOUS AND HAZARDOUS SUBSTANCE which should be handled by trained staff only.

Applications

- Western Blot (Tissue lysate)

ITGAL polyclonal antibody (Cat # PAB18711) (0.5 ug/mL) staining of human spleen lysate (35 ug protein in RIPA buffer). Primary incubation was 1 hour. Detected by chemiluminescence.

- Immunohistochemistry (Formalin/PFA-fixed paraffin-embedded sections)

ITGAL polyclonal antibody (Cat # PAB18711) (3.8 ug/mL) staining of paraffin embedded human spleen. Steamed antigen retrieval with citrate buffer pH 6, AP-staining.

- Enzyme-linked Immunoabsorbent Assay

Gene Info — ITGAL

Entrez GeneID	3683
Protein Accession#	NP_002200.2;NP_001107852.1
Gene Name	ITGAL
Gene Alias	CD11A, LFA-1, LFA1A
Gene Description	integrin, alpha L (antigen CD11A (p180), lymphocyte function-associated antigen 1; alpha polypeptide)
Omim ID	153370

Gene Ontology

[Hyperlink](#)

Gene Summary

ITGAL encodes the integrin alpha L chain. Integrins are heterodimeric integral membrane proteins composed of an alpha chain and a beta chain. This L-domain containing alpha integrin combines with the beta 2 chain (ITGB2) to form the integrin lymphocyte function-associated antigen-1 (LFA-1), which is expressed on all leukocytes. LFA-1 plays a central role in leukocyte intercellular adhesion through interactions with its ligands, ICAMs 1-3 (intercellular adhesion molecules 1 through 3), and also functions in lymphocyte costimulatory signaling. Two transcript variants encoding different isoforms have been found for this gene. [provided by RefSeq]

Other Designations

LFA-1 alpha|antigen CD11A (p180), lymphocyte function-associated antigen 1, alpha polypeptide|integrin alpha L|integrin gene promoter|lymphocyte function-associated antigen 1

Pathway

- [Cell adhesion molecules \(CAMs\)](#)
- [Leukocyte transendothelial migration](#)
- [Natural killer cell mediated cytotoxicity](#)
- [Regulation of actin cytoskeleton](#)

Disease

- [Cardiovascular Diseases](#)
- [Diabetes Mellitus](#)
- [Edema](#)
- [Genetic Predisposition to Disease](#)
- [Helicobacter Infections](#)
- [Stomach Ulcer](#)