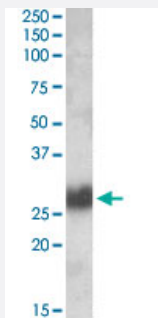


THY1 polyclonal antibody

Catalog # PAB18705 Size 100 ug

Applications



Western Blot (Tissue lysate)

THY1 polyclonal antibody (Cat # PAB18705) (0.1 ug/mL) staining of human tonsil lysate (35 ug protein in RIPA buffer). Primary incubation was 1 hour. Detected by chemiluminescence.

Specification

Product Description	Goat polyclonal antibody raised against synthetic peptide of THY1.
Immunogen	A synthetic peptide corresponding to amino acids at internal region of human THY1.
Sequence	C-PEHTYRSRTNFTSKY
Host	Goat
Theoretical MW (kDa)	26
Reactivity	Human
Form	Liquid
Purification	Antigen affinity purification
Concentration	0.5 mg/mL
Recommend Usage	ELISA (1:64000) Western Blot (0.1-0.3 ug/mL) The optimal working dilution should be determined by the end user.
Storage Buffer	In Tris saline, pH 7.3 (0.02% sodium azide, 0.5% BSA)

Storage Instruction

Store at -20°C.
Aliquot to avoid repeated freezing and thawing.

Note

This product contains sodium azide: a POISONOUS AND HAZARDOUS SUBSTANCE which should be handled by trained staff only.

Applications

- Western Blot (Tissue lysate)

THY1 polyclonal antibody (Cat # PAB18705) (0.1 ug/mL) staining of human tonsil lysate (35 ug protein in RIPA buffer). Primary incubation was 1 hour. Detected by chemiluminescence.

- Enzyme-linked Immunoabsorbent Assay

Gene Info — THY1

Entrez GeneID[7070](#)**Protein Accession#**[NP_006279.2](#)**Gene Name**

THY1

Gene Alias

CD90, FLJ33325

Gene Description

Thy-1 cell surface antigen

Omim ID[188230](#)**Gene Ontology**[Hyperlink](#)**Other Designations**

Thy-1 T-cell antigen|Thy-1 membrane glycoprotein

Pathway

- [Leukocyte transendothelial migration](#)

Disease

- [Celiac Disease](#)
- [Genetic Predisposition to Disease](#)