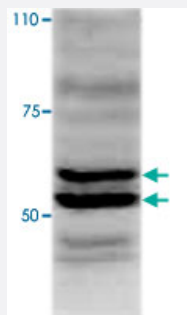


AIM2 polyclonal antibody

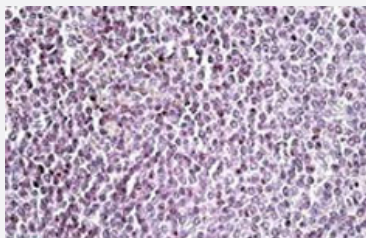
Catalog # PAB18597 Size 100 ug

Applications



Western Blot (Cell lysate)

AIM2 polyclonal antibody (Cat # PAB18597) (1 ug/mL) staining of IFNbeta-treated WI-38 lysate (35 ug protein in RIPA buffer). Primary incubation was 1 hour. Detected by chemiluminescence.



Immunohistochemistry (Formalin/PFA-fixed paraffin-embedded sections)

AIM2 polyclonal antibody (Cat # PAB18597) (3.8 ug/mL) staining of paraffin embedded human spleen. Steamed antigen retrieval with citrate buffer pH 6, AP-staining.

Specification

Product Description	Goat polyclonal antibody raised against synthetic peptide of AIM2.
Immunogen	A synthetic peptide corresponding to C-terminus of human AIM2.
Sequence	C-GEKLQLTSGVHSTIK
Host	Goat
Theoretical MW (kDa)	39
Reactivity	Human
Form	Liquid

Purification	Antigen affinity purification
Concentration	0.5 mg/mL
Recommend Usage	ELISA (1:8000) Western Blot (1-3 ug/mL) Immunohistochemistry (Formalin/PFA-fixed paraffin-embedded sections) (4-6 ug/mL) The optimal working dilution should be determined by the end user.
Storage Buffer	In 0.5 mg/mL Tris saline, pH 7.3 (0.02% sodium azide, 0.5% BSA)
Storage Instruction	Store at -20°C. Aliquot to avoid repeated freezing and thawing.
Note	This product contains sodium azide: a POISONOUS AND HAZARDOUS SUBSTANCE which should be handled by trained staff only.

Applications

- Western Blot (Cell lysate)

AIM2 polyclonal antibody (Cat # PAB18597) (1 ug/mL) staining of IFNbeta-treated WI-38 lysate (35 ug protein in RIPA buffer). Primary incubation was 1 hour. Detected by chemiluminescence.

- Immunohistochemistry (Formalin/PFA-fixed paraffin-embedded sections)

AIM2 polyclonal antibody (Cat # PAB18597) (3.8 ug/mL) staining of paraffin embedded human spleen. Steamed antigen retrieval with citrate buffer pH 6, AP-staining.

- Enzyme-linked Immunoabsorbent Assay

Gene Info — AIM2

Entrez GeneID	9447
Protein Accession#	NP_004824.1
Gene Name	AIM2
Gene Alias	PYHIN4
Gene Description	absent in melanoma 2
Omim ID	604578
Gene Ontology	Hyperlink

Gene Summary

AIM2 is a member of the IFI202X /IFI16 family. It plays a putative role in tumorigenic reversion and may control cell proliferation. Interferon-gamma induces expression of AIM2. [provided by RefSeq]

Other Designations

OTTHUMP00000035296

Disease

- [Genetic Predisposition to Disease](#)
- [Lupus Erythematosus](#)