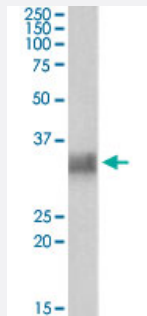


# BST2 polyclonal antibody

Catalog # PAB18547      Size 100 ug

## Applications



### Western Blot (Tissue lysate)

BST2 polyclonal antibody (Cat # PAB18547) (0.3 ug/mL) staining of human spleen lysate (35 ug protein in RIPA buffer). Primary incubation was 1 hour. Detected by chemiluminescence.

## Specification

<b>Product Description</b>	Goat polyclonal antibody raised against synthetic peptide of BST2.
<b>Immunogen</b>	A synthetic peptide corresponding to amino acids at internal region of human BST2.
<b>Sequence</b>	C-ELTEAQKGFQD
<b>Host</b>	Goat
<b>Theoretical MW (kDa)</b>	30
<b>Reactivity</b>	Human
<b>Form</b>	Liquid
<b>Purification</b>	Antigen affinity purification
<b>Concentration</b>	0.5 mg/mL
<b>Recommend Usage</b>	ELISA (1:32000) Western Blot (1-3 ug/mL) The optimal working dilution should be determined by the end user.
<b>Storage Buffer</b>	In 0.5 mg/mL Tris saline, pH 7.3 (0.02% sodium azide, 0.5% BSA)

**Storage Instruction**

Store at -20°C.  
Aliquot to avoid repeated freezing and thawing.

**Note**

This product contains sodium azide: a POISONOUS AND HAZARDOUS SUBSTANCE which should be handled by trained staff only.

## Applications

- Western Blot (Tissue lysate)

BST2 polyclonal antibody (Cat # PAB18547) (0.3 ug/mL) staining of human spleen lysate (35 ug protein in RIPA buffer). Primary incubation was 1 hour. Detected by chemiluminescence.

- Enzyme-linked Immunoabsorbent Assay

## Gene Info — BST2

**Entrez GeneID**[684](#)**Protein Accession#**[NP\\_004326.1](#)**Gene Name**

BST2

**Gene Alias**

CD317

**Gene Description**

bone marrow stromal cell antigen 2

**Omim ID**[600534](#)**Gene Ontology**[Hyperlink](#)**Gene Summary**

Bone marrow stromal cells are involved in the growth and development of B-cells. The specific function of the protein encoded by the bone marrow stromal cell antigen 2 is undetermined; however, this protein may play a role in pre-B-cell growth and in rheumatoid arthritis. [provided by RefSeq]

**Other Designations**

tetherin

## Disease

- [Genetic Predisposition to Disease](#)
- [Ovarian Neoplasms](#)