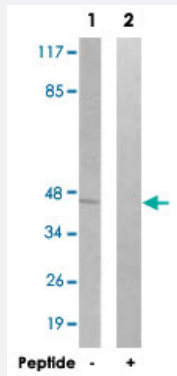


# ILK polyclonal antibody

Catalog # PAB18513      Size 100 ug

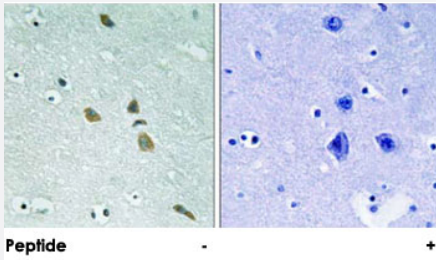
## Applications



### Western Blot (Tissue lysate)

Western blot analysis of extracts from rat liver cells, using ILK polyclonal antibody (Cat # PAB18513).

Peptide "+" means "peptide blocking".



### Immunohistochemistry (Formalin/PFA-fixed paraffin-embedded sections)

Immunohistochemical analysis of paraffin-embedded human brain tissue using ILK polyclonal antibody (Cat # PAB18513).

Peptide "+" means "peptide blocking".

## Specification

<b>Product Description</b>	Rabbit polyclonal antibody raised against synthetic peptide of ILK.
<b>Immunogen</b>	A synthetic peptide corresponding to residues surrounding S246 of human ILK.
<b>Host</b>	Rabbit
<b>Reactivity</b>	Human, Mouse, Rat
<b>Specificity</b>	This antibody is specific to ILK.
<b>Form</b>	Liquid

<b>Purification</b>	Affinity purification
<b>Recommend Usage</b>	Western Blot (1:500-1:1000) Immunohistochemistry (1:50-1:100) ELISA (1:5000) The optimal working dilution should be determined by the end user.
<b>Storage Buffer</b>	In PBS, 150mM NaCl, pH 7.4 (50% glycerol, 0.02% sodium azide)
<b>Storage Instruction</b>	Store at -20°C. Aliquot to avoid repeated freezing and thawing.
<b>Note</b>	This product contains sodium azide: a POISONOUS AND HAZARDOUS SUBSTANCE which should be handled by trained staff only.

## Applications

- Western Blot (Tissue lysate)

Western blot analysis of extracts from rat liver cells, using ILK polyclonal antibody (Cat # PAB18513).  
Peptide "+" means "peptide blocking".

- Immunohistochemistry (Formalin/PFA-fixed paraffin-embedded sections)

Immunohistochemical analysis of paraffin-embedded human brain tissue using ILK polyclonal antibody (Cat # PAB18513).  
Peptide "+" means "peptide blocking".

- Enzyme-linked Immunoabsorbent Assay

## Gene Info — ILK

<b>Entrez GeneID</b>	<a href="#">3611</a>
<b>Protein Accession#</b>	<a href="#">Q13418</a>
<b>Gene Name</b>	ILK
<b>Gene Alias</b>	DKFZp686F1765, P59
<b>Gene Description</b>	integrin-linked kinase
<b>Omim ID</b>	<a href="#">602366</a>
<b>Gene Ontology</b>	<a href="#">Hyperlink</a>

**Gene Summary**

Transduction of extracellular matrix signals through integrins influences intracellular and extracellular functions, and appears to require interaction of integrin cytoplasmic domains with cellular proteins. Integrin-linked kinase (ILK), interacts with the cytoplasmic domain of beta-1 integrin. This gene encodes a serine/threonine protein kinase with 4 ankyrin-like repeats, which associates with the cytoplasmic domain of beta integrins and acts as a proximal receptor kinase regulating integrin-mediated signal transduction. Multiple alternatively spliced transcript variants encoding the same protein have been found for this gene. [provided by RefSeq]

**Other Designations**

-

**Publication Reference**

- [Cloning of an isoform of integrin-linked kinase \(ILK\) that is upregulated in HT-144 melanoma cells following TGF-beta1 stimulation.](#)

Janji B, Melchior C, Vallar L, Kieffer N.

Oncogene 2000 Jun; 19(27):3069.

Application: WB-Ce, Human, HT-144, HT-1040, SK-Mel-2, SK-Mel-1, PC-3 cells, Fibroblasts

**Pathway**

- [Endometrial cancer](#)
- [Focal adhesion](#)
- [PPAR signaling pathway](#)