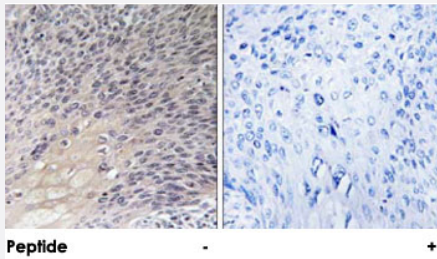


ARHGDIA polyclonal antibody

Catalog # PAB18433 Size 100 ug

Applications



Immunohistochemistry (Formalin/PFA-fixed paraffin-embedded sections)

Immunohistochemical analysis of paraffin-embedded human cervix carcinoma tissue using ARHGDIA polyclonal antibody (Cat # PAB18433).
Peptide "+" means "peptide blocking".

Specification

Product Description Rabbit polyclonal antibody raised against synthetic peptide of ARHGDIA.

Immunogen A synthetic peptide corresponding to human ARHGDIA.

Host Rabbit

Reactivity Human, Mouse, Rat

Specificity This antibody is specific to ARHGDIA.

Form Liquid

Purification Affinity purification

Concentration 1 mg/mL

Recommend Usage
Immunohistochemistry (1:50-1:100)
ELISA (1:10000)
The optimal working dilution should be determined by the end user.

Storage Buffer In PBS, 150mM NaCl, pH 7.4 (50% glycerol, 0.02% sodium azide)

Storage Instruction

Store at -20°C.
Aliquot to avoid repeated freezing and thawing.

Note

This product contains sodium azide: a POISONOUS AND HAZARDOUS SUBSTANCE which should be handled by trained staff only.

Applications

- Immunohistochemistry (Formalin/PFA-fixed paraffin-embedded sections)

Immunohistochemical analysis of paraffin-embedded human cervix carcinoma tissue using ARHGDIA polyclonal antibody (Cat # PAB18433).

Peptide "+" means "peptide blocking".

- Enzyme-linked Immunoabsorbent Assay

Gene Info — ARHGDIA

Entrez GeneID[396](#)**Protein Accession#**[P52565](#)**Gene Name**

ARHGDIA

Gene Alias

GDIA1, MGC117248, RHOGDI, RHOGDI-1

Gene Description

Rho GDP dissociation inhibitor (GDI) alpha

Omim ID[601925](#)**Gene Ontology**[Hyperlink](#)**Gene Summary**

Aplysia Ras-related homologs (ARHs), also called Rho genes, belong to the RAS gene superfamily encoding small guanine nucleotide exchange (GTP/GDP) factors. The ARH proteins may be kept in the inactive, GDP-bound state by interaction with GDP dissociation inhibitors, such as ARHGDIA (Leffers et al., 1993 [PubMed 8262133]).[supplied by OMIM]

Other Designations

-

Pathway

- [Neurotrophin signaling pathway](#)