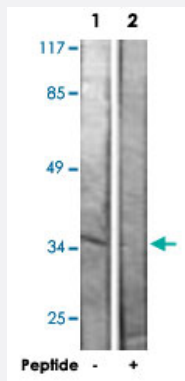


ZFP36L1 polyclonal antibody

Catalog # PAB18432 Size 100 ug

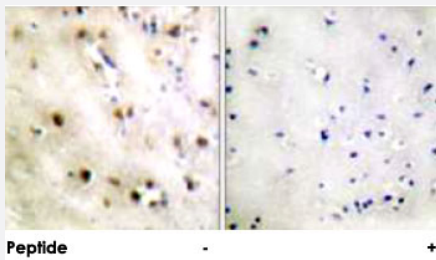
Applications



Western Blot (Cell lysate)

Western blot analysis of extracts from Jurkat cells, using ZFP36L1 polyclonal antibody (Cat # PAB18432).

Peptide "+" means "peptide blocking".



Immunohistochemistry (Formalin/PFA-fixed paraffin-embedded sections)

Immunohistochemical analysis of paraffin-embedded human brain tissue using ZFP36L1 polyclonal antibody (Cat # PAB18432).

Peptide "+" means "peptide blocking".

Specification

Product Description	Rabbit polyclonal antibody raised against synthetic peptide of ZFP36L1.
Immunogen	A synthetic peptide corresponding to residues surrounding S92 of human ZFP36L1.
Host	Rabbit
Reactivity	Human, Mouse, Rat
Specificity	This antibody is specific to ZFP36L1.
Form	Liquid

Purification	Affinity purification
Concentration	1 mg/mL
Recommend Usage	Western Blot (1:500-1:1000) Immunohistochemistry (1:50-1:100) ELISA (1:10000) The optimal working dilution should be determined by the end user.
Storage Buffer	In PBS, 150mM NaCl, pH 7.4 (50% glycerol, 0.02% sodium azide)
Storage Instruction	Store at -20°C. Aliquot to avoid repeated freezing and thawing.
Note	This product contains sodium azide: a POISONOUS AND HAZARDOUS SUBSTANCE which should be handled by trained staff only.

Applications

- Western Blot (Cell lysate)

Western blot analysis of extracts from Jurkat cells, using ZFP36L1 polyclonal antibody (Cat # PAB18432).
Peptide "+" means "peptide blocking".

- Immunohistochemistry (Formalin/PFA-fixed paraffin-embedded sections)

Immunohistochemical analysis of paraffin-embedded human brain tissue using ZFP36L1 polyclonal antibody (Cat # PAB18432).
Peptide "+" means "peptide blocking".

- Enzyme-linked Immunoabsorbent Assay

Gene Info — ZFP36L1

Entrez GeneID	677
Protein Accession#	Q07352
Gene Name	ZFP36L1
Gene Alias	BRF1, Berg36, ERF-1, ERF1, RNF162B, TIS11B, cMG1
Gene Description	zinc finger protein 36, C3H type-like 1
Omim ID	601064
Gene Ontology	Hyperlink

Gene Summary

This gene is a member of the TIS11 family of early response genes. Family members are induced by various agonists such as the phorbol ester TPA and the polypeptide mitogen EGF. The gene is well conserved across species and has a promoter that contains motifs seen in other early-response genes. The encoded protein contains a distinguishing putative zinc finger domain with a repeating cys-his motif. This putative nuclear transcription factor most likely functions in regulating the response to growth factors. [provided by RefSeq]

Other Designations

EGF-response factor 1|butyrate response factor 1|early response factor Berg36|zinc finger protein, C3H type, 36-like 1