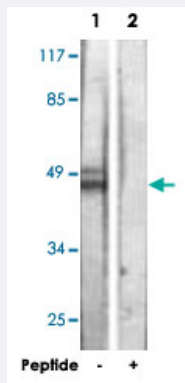


# SSB polyclonal antibody

Catalog # PAB18431      Size 100 ug

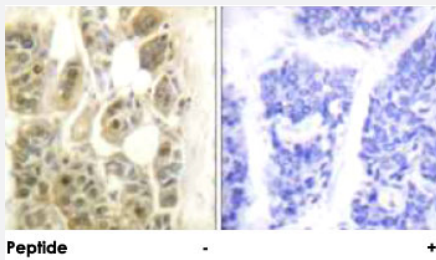
## Applications



### Western Blot (Cell lysate)

Western blot analysis of extracts from 293 cells, using SSB polyclonal antibody (Cat # PAB18431).

Peptide "+" means "peptide blocking".



### Immunohistochemistry (Formalin/PFA-fixed paraffin-embedded sections)

Immunohistochemical analysis of paraffin-embedded human breast carcinoma tissue using SSB polyclonal antibody (Cat # PAB18431).

Peptide "+" means "peptide blocking".

## Specification

<b>Product Description</b>	Rabbit polyclonal antibody raised against synthetic peptide of SSB.
<b>Immunogen</b>	A synthetic peptide corresponding to residues surrounding S366 of human SSB.
<b>Host</b>	Rabbit
<b>Reactivity</b>	Human
<b>Specificity</b>	This antibody is specific to SSB.
<b>Form</b>	Liquid

Purification	Affinity purification
Concentration	1 mg/mL
Recommend Usage	Western Blot (1:500-1:1000) Immunohistochemistry (1:50-1:100) ELISA (1:10000) The optimal working dilution should be determined by the end user.
Storage Buffer	In PBS, 150mM NaCl, pH 7.4 (50% glycerol, 0.02% sodium azide)
Storage Instruction	Store at -20°C. Aliquot to avoid repeated freezing and thawing.
Note	This product contains sodium azide: a POISONOUS AND HAZARDOUS SUBSTANCE which should be handled by trained staff only.

## Applications

- Western Blot (Cell lysate)

Western blot analysis of extracts from 293 cells, using SSB polyclonal antibody (Cat # PAB18431).  
Peptide "+" means "peptide blocking".

- Immunohistochemistry (Formalin/PFA-fixed paraffin-embedded sections)

Immunohistochemical analysis of paraffin-embedded human breast carcinoma tissue using SSB polyclonal antibody (Cat # PAB18431).  
Peptide "+" means "peptide blocking".

- Enzyme-linked Immunoabsorbent Assay

## Gene Info — SSB

Entrez GeneID	<a href="#">6741</a>
Protein Accession#	<a href="#">P05455</a>
Gene Name	SSB
Gene Alias	LARP3, La
Gene Description	Sjogren syndrome antigen B (autoantigen La)
Omim ID	<a href="#">109090</a>
Gene Ontology	<a href="#">Hyperlink</a>

**Gene Summary**

La is involved in diverse aspects of RNA metabolism, including binding and protecting 3-prime U UU(OH) elements of newly RNA polymerase III (see MIM 606007)-transcribed RNA, processing 5-prime and 3-prime ends of pre-tRNA precursors, acting as an RNA chaperone, and binding viral RNAs associated with hepatitis C virus. La protein was originally defined by its reactivity with auto antibodies from patients with Sjogren syndrome (MIM 270150) and systemic lupus erythematosus (SLE; MIM 152700) (Teplova et al., 2006 [PubMed 16387655]).[supplied by OMIM]

**Other Designations**

La ribonucleoprotein domain family, member 3|SS-B/La protein|autoantigen La

**Pathway**

- [Systemic lupus erythematosus](#)

**Disease**

- [Disease Progression](#)
- [Disease Susceptibility](#)
- [HIV Infections](#)