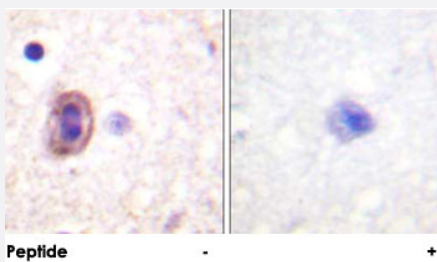


# MAP2K4 polyclonal antibody

Catalog # PAB18419      Size 100 ug

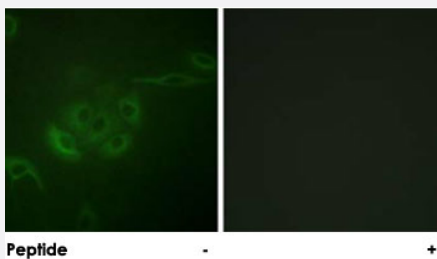
## Applications



### Immunohistochemistry (Formalin/PFA-fixed paraffin-embedded sections)

Immunohistochemical analysis of paraffin-embedded human brain tissue using MAP2K4 polyclonal antibody (Cat # PAB18419).

Peptide "+" means "peptide blocking".



### Immunofluorescence

Immunofluorescence analysis of A-549 cells, using MAP2K4 polyclonal antibody (Cat # PAB18419).

Peptide "+" means "peptide blocking".

## Specification

Product Description	Rabbit polyclonal antibody raised against synthetic peptide of MAP2K4.
Immunogen	A synthetic peptide corresponding to human MAP2K4.
Host	Rabbit
Reactivity	Human, Mouse, Rat
Specificity	This antibody is specific to MAP2K4.
Form	Liquid
Purification	Affinity purification

Concentration	1 mg/mL
Recommend Usage	Immunohistochemistry (1:50-1:100) Immunofluorescence (1:500-1:1000) ELISA (1:20000) The optimal working dilution should be determined by the end user.
Storage Buffer	In PBS, 150mM NaCl, pH 7.4 (50% glycerol, 0.02% sodium azide)
Storage Instruction	Store at -20°C. Aliquot to avoid repeated freezing and thawing.
Note	This product contains sodium azide: a POISONOUS AND HAZARDOUS SUBSTANCE which should be handled by trained staff only.

## Applications

- Immunohistochemistry (Formalin/PFA-fixed paraffin-embedded sections)

Immunohistochemical analysis of paraffin-embedded human brain tissue using MAP2K4 polyclonal antibody (Cat # PAB18419).  
Peptide "+" means "peptide blocking".

- Immunofluorescence

Immunofluorescence analysis of A-549 cells, using MAP2K4 polyclonal antibody (Cat # PAB18419).  
Peptide "+" means "peptide blocking".

- Enzyme-linked Immunoabsorbent Assay

## Gene Info — MAP2K4

Entrez GeneID	<a href="#">6416</a>
Protein Accession#	<a href="#">P45985</a>
Gene Name	MAP2K4
Gene Alias	JNKK, JNKK1, MAPKK4, MEK4, MKK4, PRKMK4, SEK1, SERK1
Gene Description	mitogen-activated protein kinase kinase 4
Omim ID	<a href="#">601335</a>
Gene Ontology	<a href="#">Hyperlink</a>

**Gene Summary**

This gene encodes a dual specificity protein kinase that belongs to the Ser/Thr protein kinase family. This kinase is a direct activator of MAP kinases in response to various environmental stresses or mitogenic stimuli. It has been shown to activate MAPK8/JNK1, MAPK9/JNK2, and MAPK14/p38, but not MAPK1/ERK2 or MAPK3/ERK3. This kinase is phosphorylated, and thus activated by MAP3K1/MEKK. The knockout studies in mice suggested the roles of this kinase in mediating survival signal in T cell development, as well as in the organogenesis of liver. [provided by RefSeq]

**Other Designations**

JNK activating kinase 1|JNK-activated kinase 1|MAP kinase kinase 4|MAPK/ERK kinase 4|SAPK/ERK kinase 1|c-Jun N-terminal kinase kinase 1|dual specificity mitogen-activated protein kinase kinase 4

**Pathway**

- [Epithelial cell signaling in Helicobacter pylori infection](#)
- [ErbB signaling pathway](#)
- [Fc epsilon RI signaling pathway](#)
- [GnRH signaling pathway](#)
- [MAPK signaling pathway](#)
- [Toll-like receptor signaling pathway](#)

**Disease**

- [Colorectal Neoplasms](#)
- [Genetic Predisposition to Disease](#)
- [Lung Neoplasms](#)
- [Pancreatic cancer](#)
- [Pancreatic Neoplasms](#)