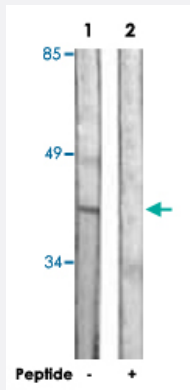


DUSP1 polyclonal antibody

Catalog # PAB18411 Size 100 ug

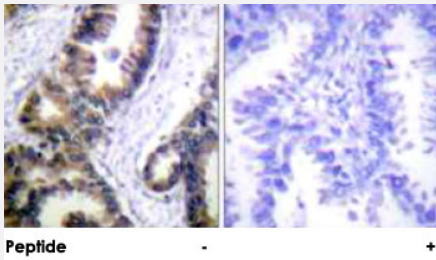
Applications



Western Blot (Cell lysate)

Western blot analysis of extracts from Jurkat cells, using DUSP1 polyclonal antibody (Cat # PAB18411).

Peptide "+" means "peptide blocking".



Immunohistochemistry (Formalin/PFA-fixed paraffin-embedded sections)

Immunohistochemical analysis of paraffin-embedded human lung carcinoma tissue using DUSP1 polyclonal antibody (Cat # PAB18411).

Peptide "+" means "peptide blocking".

Specification

Product Description	Rabbit polyclonal antibody raised against synthetic peptide of DUSP1.
Immunogen	A synthetic peptide corresponding to residues surrounding S359 of human DUSP1.
Host	Rabbit
Reactivity	Human
Specificity	This antibody is specific to DUSP1.
Form	Liquid

Purification	Affinity purification
Concentration	1 mg/mL
Recommend Usage	Western Blot (1:500-1:1000) Immunohistochemistry (1:50-1:100) ELISA (1:5000) The optimal working dilution should be determined by the end user.
Storage Buffer	In PBS, 150mM NaCl, pH 7.4 (50% glycerol, 0.02% sodium azide)
Storage Instruction	Store at -20°C. Aliquot to avoid repeated freezing and thawing.
Note	This product contains sodium azide: a POISONOUS AND HAZARDOUS SUBSTANCE which should be handled by trained staff only.

Applications

- Western Blot (Cell lysate)

Western blot analysis of extracts from Jurkat cells, using DUSP1 polyclonal antibody (Cat # PAB18411).
Peptide "+" means "peptide blocking".

- Immunohistochemistry (Formalin/PFA-fixed paraffin-embedded sections)

Immunohistochemical analysis of paraffin-embedded human lung carcinoma tissue using DUSP1 polyclonal antibody (Cat # PAB18411).
Peptide "+" means "peptide blocking".

- Enzyme-linked Immunoabsorbent Assay

Gene Info — DUSP1

Entrez GeneID	1843
Protein Accession#	P28562
Gene Name	DUSP1
Gene Alias	CL100, HVH1, MKP-1, MKP1, PTPN10
Gene Description	dual specificity phosphatase 1
Omim ID	600714
Gene Ontology	Hyperlink

Gene Summary

The expression of DUSP1 gene is induced in human skin fibroblasts by oxidative/heat stress and growth factors. It specifies a protein with structural features similar to members of the non-receptor-type protein-tyrosine phosphatase family, and which has significant amino-acid sequence similarity to a Tyr/Ser-protein phosphatase encoded by the late gene H1 of vaccinia virus. The bacterially expressed and purified DUSP1 protein has intrinsic phosphatase activity, and specifically inactivates mitogen-activated protein (MAP) kinase in vitro by the concomitant dephosphorylation of both its phosphothreonine and phosphotyrosine residues. Furthermore, it suppresses the activation of MAP kinase by oncogenic ras in extracts of *Xenopus* oocytes. Thus, DUSP1 may play an important role in the human cellular response to environmental stress as well as in the negative regulation of cellular proliferation. [provided by RefSeq]

Other Designations

serine/threonine specific protein phosphatase

Pathway

- [MAPK signaling pathway](#)

Disease

- [Arthritis](#)
- [Asthma](#)
- [Cardiovascular Diseases](#)
- [Diabetes Mellitus](#)
- [Edema](#)
- [Genetic Predisposition to Disease](#)
- [Kidney Failure](#)
- [Lung Neoplasms](#)
- [Multiple Sclerosis](#)