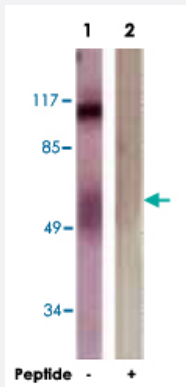


# CTNND1 polyclonal antibody

Catalog # PAB18334      Size 100 ug

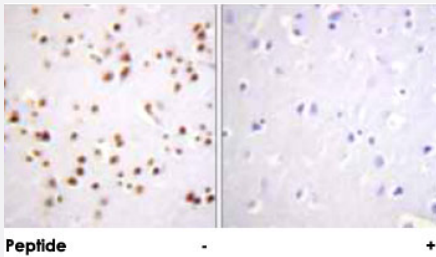
## Applications



### Western Blot (Cell lysate)

Western blot analysis of extracts from HUVEC cells, using CTNND1 polyclonal antibody (Cat # PAB18334).

Peptide "+" means "peptide blocking".



### Immunohistochemistry (Formalin/PFA-fixed paraffin-embedded sections)

Immunohistochemical analysis of paraffin-embedded human brain tissue using CTNND1 polyclonal antibody (Cat # PAB18334).

Peptide "+" means "peptide blocking".

## Specification

Product Description	Rabbit polyclonal antibody raised against synthetic peptide of CTNND1.
Immunogen	A synthetic peptide corresponding to residues surrounding Y228 of human CTNND1.
Host	Rabbit
Reactivity	Human, Mouse, Rat
Specificity	This antibody is specific to CTNND1.
Form	Liquid

<b>Purification</b>	Affinity purification
<b>Concentration</b>	1 mg/mL
<b>Recommend Usage</b>	Western Blot (1:500-1:1000) Immunohistochemistry (1:50-1:100) ELISA (1:5000) The optimal working dilution should be determined by the end user.
<b>Storage Buffer</b>	In PBS, 150mM NaCl, pH 7.4 (50% glycerol, 0.02% sodium azide)
<b>Storage Instruction</b>	Store at -20°C. Aliquot to avoid repeated freezing and thawing.
<b>Note</b>	This product contains sodium azide: a POISONOUS AND HAZARDOUS SUBSTANCE which should be handled by trained staff only.

## Applications

- Western Blot (Cell lysate)

Western blot analysis of extracts from HUVEC cells, using CTNND1 polyclonal antibody (Cat # PAB18334).  
Peptide "+" means "peptide blocking".

- Immunohistochemistry (Formalin/PFA-fixed paraffin-embedded sections)

Immunohistochemical analysis of paraffin-embedded human brain tissue using CTNND1 polyclonal antibody (Cat # PAB18334).  
Peptide "+" means "peptide blocking".

- Enzyme-linked Immunoabsorbent Assay

## Gene Info — CTNND1

<b>Entrez GeneID</b>	<a href="#">1500</a>
<b>Protein Accession#</b>	<a href="#">O60716</a>
<b>Gene Name</b>	CTNND1
<b>Gene Alias</b>	CAS, CTNND, KIAA0384, P120CAS, P120CTN, p120
<b>Gene Description</b>	catenin (cadherin-associated protein), delta 1
<b>Omim ID</b>	<a href="#">601045</a>
<b>Gene Ontology</b>	<a href="#">Hyperlink</a>

**Gene Summary**

This gene encodes a member of the Armadillo protein family, which function in adhesion between cells and signal transduction. Multiple translation initiation codons and alternative splicing result in many different isoforms being translated. Not all of the full-length nature of the described transcript variants have been determined. [provided by RefSeq]

**Other Designations**

catenin, delta 1

## Pathway

- [Adherens junction](#)
- [Leukocyte transendothelial migration](#)