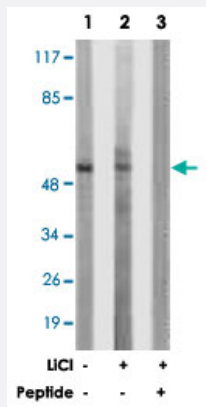


HDAC1 polyclonal antibody

Catalog # PAB18277 Size 100 ug

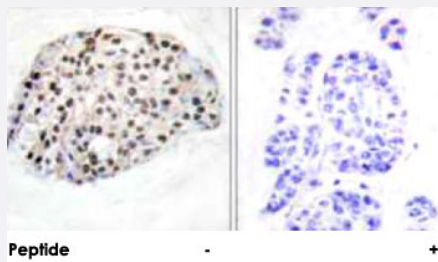
Applications



Western Blot (Cell lysate)

Western blot analysis of extracts from NIH/3T3 cells (Lane 1), and 293 cells (Lane 2 and 3) treated with LiCl (10 nM, 30 mins), using HDAC1 polyclonal antibody (Cat # PAB18277).

Peptide "+" means "peptide blocking".



Immunohistochemistry (Formalin/PFA-fixed paraffin-embedded sections)

Immunohistochemical analysis of paraffin-embedded human breast carcinoma tissue using HDAC1 polyclonal antibody (Cat # PAB18277).

Peptide "+" means "peptide blocking".

Specification

Product Description	Rabbit polyclonal antibody raised against synthetic peptide of HDAC1.
Immunogen	A synthetic peptide corresponding to residues surrounding S421 of human HDAC1.
Host	Rabbit
Reactivity	Human, Mouse, Rat
Specificity	This antibody is specific to HDAC1.
Form	Liquid

Purification	Affinity purification
Concentration	1 mg/mL
Recommend Usage	Western Blot (1:500-1:1000) Immunohistochemistry (1:50-1:100) ELISA (1:5000) The optimal working dilution should be determined by the end user.
Storage Buffer	In PBS, 150mM NaCl, pH 7.4 (50% glycerol, 0.02% sodium azide)
Storage Instruction	Store at -20°C. Aliquot to avoid repeated freezing and thawing.
Note	This product contains sodium azide: a POISONOUS AND HAZARDOUS SUBSTANCE which should be handled by trained staff only.

Applications

- Western Blot (Cell lysate)

Western blot analysis of extracts from NIH/3T3 cells (Lane 1), and 293 cells (Lane 2 and 3) treated with LiCl (10 nM, 30 mins), using HDAC1 polyclonal antibody (Cat # PAB18277).

Peptide "+" means "peptide blocking".

- Immunohistochemistry (Formalin/PFA-fixed paraffin-embedded sections)

Immunohistochemical analysis of paraffin-embedded human breast carcinoma tissue using HDAC1 polyclonal antibody (Cat # PAB18277).

Peptide "+" means "peptide blocking".

- Enzyme-linked Immunoabsorbent Assay

Gene Info — HDAC1

Entrez GeneID	3065
Protein Accession#	Q13547
Gene Name	HDAC1
Gene Alias	DKFZp686H12203, GON-10, HD1, RPD3, RPD3L1
Gene Description	histone deacetylase 1
Omim ID	601241

Gene Ontology

[Hyperlink](#)

Gene Summary

Histone acetylation and deacetylation, catalyzed by multisubunit complexes, play a key role in the regulation of eukaryotic gene expression. The protein encoded by this gene belongs to the histone deacetylase/acuc/apha family and is a component of the histone deacetylase complex. It also interacts with retinoblastoma tumor-suppressor protein and this complex is a key element in the control of cell proliferation and differentiation. Together with metastasis-associated protein-2, it deacetylates p53 and modulates its effect on cell growth and apoptosis. [provided by RefSeq

Other Designations

OTTHUMP00000008745|reduced potassium dependency, yeast homolog-like 1

Pathway

- [Cell cycle](#)
- [Chronic myeloid leukemia](#)
- [Notch signaling pathway](#)
- [Pathways in cancer](#)

Disease

- [Asthma](#)
- [Cognition Disorders](#)
- [Genetic Predisposition to Disease](#)
- [Huntington disease](#)
- [Mental Status Schedule](#)
- [Neoplasms](#)
- [Ovarian cancer](#)
- [Ovarian Neoplasms](#)
- [Tobacco Use Disorder](#)