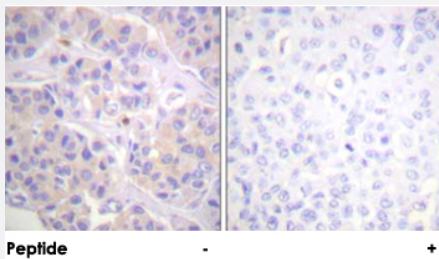


# BCAR1 polyclonal antibody

Catalog # PAB18252      Size 100 ug

## Applications



### Immunohistochemistry (Formalin/PFA-fixed paraffin-embedded sections)

Immunohistochemical analysis of paraffin-embedded human breast carcinoma tissue using BCAR1 polyclonal antibody (Cat # PAB18252).

Peptide "+" means "peptide blocking".

## Specification

**Product Description** Rabbit polyclonal antibody raised against synthetic peptide of BCAR1.

**Immunogen** A synthetic peptide corresponding to human BCAR1.

**Host** Rabbit

**Reactivity** Human, Mouse, Rat

**Specificity** This antibody is specific to BCAR1.

**Form** Liquid

**Purification** Affinity purification

**Concentration** 1 mg/mL

**Recommend Usage** Immunohistochemistry (1:50-1:100)  
ELISA (1:10000)  
The optimal working dilution should be determined by the end user.

**Storage Buffer** In PBS, 150mM NaCl, pH 7.4 (50% glycerol, 0.02% sodium azide)

**Storage Instruction**

Store at -20°C.  
Aliquot to avoid repeated freezing and thawing.

**Note**

This product contains sodium azide: a POISONOUS AND HAZARDOUS SUBSTANCE which should be handled by trained staff only.

## Applications

- Immunohistochemistry (Formalin/PFA-fixed paraffin-embedded sections)

Immunohistochemical analysis of paraffin-embedded human breast carcinoma tissue using BCAR1 polyclonal antibody (Cat # PAB18252).

Peptide "+" means "peptide blocking".

- Enzyme-linked Immunoabsorbent Assay

## Gene Info — BCAR1

**Entrez GeneID**[9564](#)**Protein Accession#**[P56945](#)**Gene Name**

BCAR1

**Gene Alias**

CAS, CAS1, CASS1, CRKAS, P130Cas

**Gene Description**

breast cancer anti-estrogen resistance 1

**Omim ID**[602941](#)**Gene Ontology**[Hyperlink](#)**Gene Summary**

BCAR1, or CAS, is an Src (MIM 190090) family kinase substrate involved in various cellular events, including migration, survival, transformation, and invasion (Sawada et al., 2006 [PubMed 17129785]).[supplied by OMIM]

**Other Designations**

Cas scaffolding protein family member 1|Crk-associated substrate p130Cas

## Publication Reference

- [p130Cas as a new regulator of mammary epithelial cell proliferation, survival, and HER2-neu oncogene-dependent breast tumorigenesis.](#)

Cabodi S, Tinnirello A, Di Stefano P, Bisaro B, Ambrosino E, Castellano I, Sapino A, Arisio R, Cavallo F, Forni G, Glukhova M, Silengo L, Altruda F, Turco E, Tarone G, Defilippi P.

Cancer Research 2006 May; 66(9):4672.

- [Association of p130CAS with phosphatidylinositol-3-OH kinase mediates adenovirus cell entry.](#)

Li E, Stupack DG, Brown SL, Klemke R, Schlaepfer DD, Nemerow GR.

The Journal of Biological Chemistry 2000 May; 275(19):14729.

Application: IP, Human, SW480 cells

## Pathway

- [Chemokine signaling pathway](#)
- [Focal adhesion](#)
- [Leukocyte transendothelial migration](#)
- [Regulation of actin cytoskeleton](#)

## Disease

- [Genetic Predisposition to Disease](#)