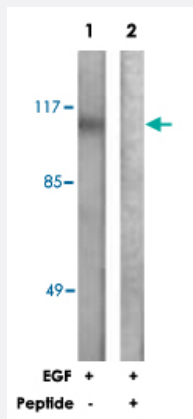


CBL polyclonal antibody

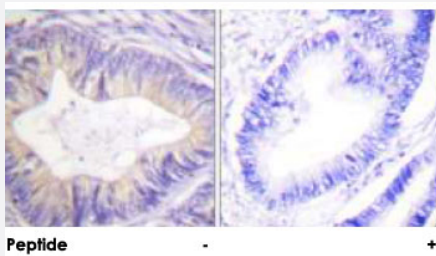
Catalog # PAB18165 Size 100 ug

Applications



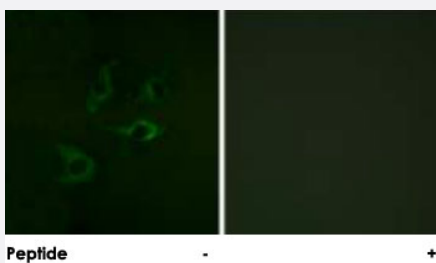
Western Blot (Cell lysate)

Western blot analysis of extracts from HeLa cells, treated with EGF (200 ng/mL, 30 mins), using CBL polyclonal antibody (Cat # PAB18165). Peptide "+" means "peptide blocking".



Immunohistochemistry (Formalin/PFA-fixed paraffin-embedded sections)

Immunohistochemical analysis of paraffin-embedded human colon carcinoma tissue using CBL polyclonal antibody (Cat # PAB18165). Peptide "+" means "peptide blocking".



Immunofluorescence

Immunofluorescence analysis of A-549 cells, using CBL polyclonal antibody (Cat # PAB18165). Peptide "+" means "peptide blocking".

Specification

Product Description

Rabbit polyclonal antibody raised against synthetic peptide of CBL.

Immunogen	A synthetic peptide corresponding to human CBL.
Host	Rabbit
Reactivity	Human, Mouse, Rat
Specificity	This antibody is specific to CBL.
Form	Liquid
Purification	Affinity purification
Concentration	1 mg/mL
Recommend Usage	Western Blot (1:500-1:1000) Immunohistochemistry (1:50-1:100) Immunofluorescence (1:500-1:1000) ELISA (1:10000) The optimal working dilution should be determined by the end user.
Storage Buffer	In PBS, 150mM NaCl, pH 7.4 (50% glycerol, 0.02% sodium azide)
Storage Instruction	Store at -20°C. Aliquot to avoid repeated freezing and thawing.
Note	This product contains sodium azide: a POISONOUS AND HAZARDOUS SUBSTANCE which should be handled by trained staff only.

Applications

- Western Blot (Cell lysate)

Western blot analysis of extracts from HeLa cells, treated with EGF (200 ng/mL, 30 mins), using CBL polyclonal antibody (Cat # PAB18165).

Peptide "+" means "peptide blocking".

- Immunohistochemistry (Formalin/PFA-fixed paraffin-embedded sections)

Immunohistochemical analysis of paraffin-embedded human colon carcinoma tissue using CBL polyclonal antibody (Cat # PAB18165).

Peptide "+" means "peptide blocking".

- Immunofluorescence

Immunofluorescence analysis of A-549 cells, using CBL polyclonal antibody (Cat # PAB18165).

Peptide "+" means "peptide blocking".

- Enzyme-linked Immunoabsorbent Assay

Gene Info — CBL

Entrez GeneID	867
Protein Accession#	P22681
Gene Name	CBL
Gene Alias	C-CBL, CBL2, RNF55
Gene Description	Cas-Br-M (murine) ecotropic retroviral transforming sequence
Omim ID	165360
Gene Ontology	Hyperlink
Gene Summary	The cbl oncogene was first identified as part of a transforming retrovirus which induces mouse pr e-B and pro-B cell lymphomas. As an adaptor protein for receptor protein-tyrosine kinases, it posi tively regulates receptor protein-tyrosine kinase ubiquitination in a manner dependent upon its var iant SH2 and RING finger domains. Ubiquitination of receptor protein-tyrosine kinases terminates signaling by marking active receptors for degradation. [provided by RefSeq
Other Designations	oncogene CBL2

Publication Reference

- [Spontaneous tumor rejection by cbl-b-deficient CD8+ T cells.](#)

Loeser S, Loser K, Bijker MS, Rangachari M, van der Burg SH, Wada T, Beissert S, Melief CJ, Penninger JM.
The Journal of Experimental Medicine 2007 Apr; 204(4):879.

- [Regulatory defects in Cbl and mitogen-activated protein kinase \(extracellular signal-related kinase\) pathways cause persistent hyperexpression of CD40 ligand in human lupus T cells.](#)

Yi Y, McNerney M, Datta SK.
The Journal of Immunology 2000 Dec; 165(11):6627.

Application: WB-Ce, Human, Lupus T cells

Pathway

- [Chronic myeloid leukemia](#)
- [Endocytosis](#)
- [ErbB signaling pathway](#)

- [Insulin signaling pathway](#)
- [Jak-STAT signaling pathway](#)
- [Pathways in cancer](#)
- [T cell receptor signaling pathway](#)
- [Ubiquitin mediated proteolysis](#)

Disease

- [Diabetes Mellitus](#)
- [Disease Progression](#)
- [Genetic Predisposition to Disease](#)
- [Leukemia](#)
- [Tobacco Use Disorder](#)