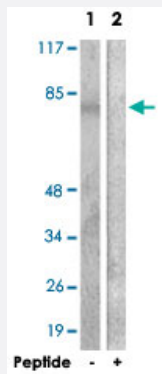


ANXA6 polyclonal antibody

Catalog # PAB18085 Size 100 ug

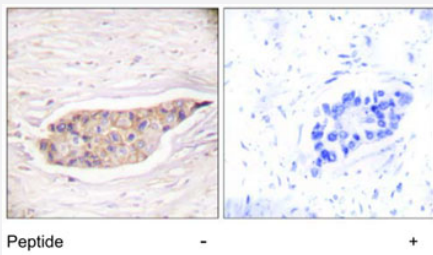
Applications



Western Blot (Cell lysate)

Western blot analysis of extracts from 293 cells, using ANXA6 polyclonal antibody (Cat # PAB18085).

Peptide "+" means "with peptide blocking".



Immunohistochemistry (Formalin/PFA-fixed paraffin-embedded sections)

Immunohistochemical analysis of paraffin-embedded human breast carcinoma tissue using ANXA6 polyclonal antibody (Cat # PAB18085).

Peptide "+" means "with peptide blocking".

Specification

Product Description	Rabbit polyclonal antibody raised against synthetic peptide of ANXA6.
Immunogen	A synthetic peptide corresponding to human ANXA6.
Host	Rabbit
Reactivity	Human
Specificity	This antibody is specific to ANXA6.
Form	Liquid

Recommend Usage	Western Blot (1:500~1:1000) Immunohistochemistry (1:50~1:100) Immunofluorescence (1:500~1:1000) ELISA (1:10000) The optimal working dilution should be determined by the end user.
Storage Buffer	In PBS, 150mM NaCl, pH 7.4 (50% glycerol, 0.02% sodium azide)
Storage Instruction	Store at -20°C. Aliquot to avoid repeated freezing and thawing.
Note	This product contains sodium azide: a POISONOUS AND HAZARDOUS SUBSTANCE which should be handled by trained staff only.

Applications

- Western Blot (Cell lysate)

Western blot analysis of extracts from 293 cells, using ANXA6 polyclonal antibody (Cat # PAB18085).
Peptide "+" means "with peptide blocking".

- Immunohistochemistry (Formalin/PFA-fixed paraffin-embedded sections)

Immunohistochemical analysis of paraffin-embedded human breast carcinoma tissue using ANXA6 polyclonal antibody (Cat # PAB18085).
Peptide "+" means "with peptide blocking".

- Immunohistochemistry

- Immunofluorescence

- Enzyme-linked Immunoabsorbent Assay

Gene Info — ANXA6

Entrez GeneID	309
----------------------	---------------------

Protein Accession#	P08133
---------------------------	------------------------

Gene Name	ANXA6
------------------	-------

Gene Alias	ANX6, CBP68
-------------------	-------------

Gene Description	annexin A6
-------------------------	------------

Omim ID	114070
----------------	------------------------

Gene Ontology

[Hyperlink](#)

Gene Summary

Annexin VI belongs to a family of calcium-dependent membrane and phospholipid binding proteins. Although their functions are still not clearly defined, several members of the annexin family have been implicated in membrane-related events along exocytotic and endocytotic pathways. The annexin VI gene is approximately 60 kbp long and contains 26 exons. It encodes a protein of about 68 kDa that consists of eight 68-amino acid repeats separated by linking sequences of variable lengths. It is highly similar to human annexins I and II sequences, each of which contain four such repeats. Exon 21 of annexin VI is alternatively spliced, giving rise to two isoforms that differ by a 6-amino acid insertion at the start of the seventh repeat. Annexin VI has been implicated in mediating the endosome aggregation and vesicle fusion in secreting epithelia during exocytosis. [provided by RefSeq]

Other Designations

annexin VI|annexin VI (p68)|calcium-binding protein p68|calelectrin|calphobindin II

Publication Reference

- [Annexin A6 controls neuronal membrane dynamics throughout chick cranial sensory gangliogenesis.](#)

Shah A, Schiffmacher AT, Taneyhill LA.

Amino Acids 2017 May; 425(1):85.

Application: IHC, WB, Chicken, Chicken embryos

- [Identification of a novel interaction between the Ca\(2+\)-binding protein S100A11 and the Ca\(2+\)- and phospholipid-binding protein annexin A6.](#)

Chang N, Sutherland C, Hesse E, Winkfein R, Wiehler WB, Pho M, Veillette C, Li S, Wilson DP, Kiss E, Walsh MP.

American Journal of Physiology. Cell Physiology 2007 Apr; 292(4):C1417.

Application: IF, Rat, Rat caudal arterial smooth muscle cells

- [Cholesterol modulates the membrane binding and intracellular distribution of annexin 6.](#)

de Diego I, Schwartz F, Siegfried H, Dauterstedt P, Heeren J, Beisiegel U, Enrich C, Grewal T.

The Journal of Biological Chemistry 2002 Jun; 277(35):32187.

Application: WB-Ce, Mouse, CHO cells

- [Endocytosis occurs independently of annexin VI in human A431 cells.](#)

Smythe E, Smith PD, Jacob SM, Theobald J, Moss SE.

The Journal of Cell Biology 1994 Feb; 124(3):301.

Application: WB-Tr, Human, A-431 cells

Disease

- [Femur Head Necrosis](#)
- [Genetic Predisposition to Disease](#)