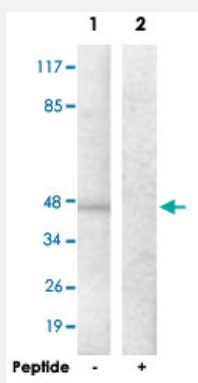


ADORA2A polyclonal antibody

Catalog # PAB18061 Size 100 ug

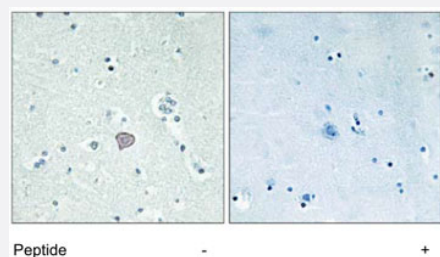
Applications



Western Blot (Cell lysate)

Western blot analysis of extracts from HepG2 cells, using ADORA2A polyclonal antibody (Cat # PAB18061).

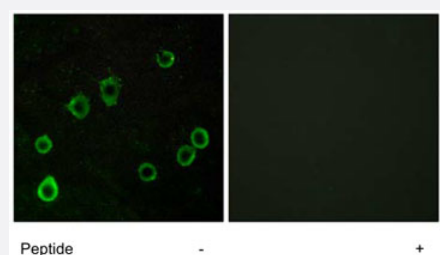
Peptide "+" means "with peptide blocking".



Immunohistochemistry (Formalin/PFA-fixed paraffin-embedded sections)

Immunohistochemistry analysis of paraffin-embedded human brain tissue using ADORA2A polyclonal antibody (Cat # PAB18061).

Peptide "+" means "with peptide blocking".



Immunofluorescence

Immunofluorescence analysis of LoVo cells, using ADORA2A polyclonal antibody (Cat # PAB18061).

Peptide "+" means "with peptide blocking".

Specification

Product Description

Rabbit polyclonal antibody raised against synthetic peptide of ADORA2A.

Immunogen	A synthetic peptide corresponding to human ADORA2A.
Host	Rabbit
Reactivity	Human
Specificity	This antibody is specific to ADORA2A.
Form	Liquid
Recommend Usage	Western Blot (1:500~1:1000) Immunohistochemistry (1:50~1:100) Immunofluorescence (1:500~1:1000) ELISA (1:5000) The optimal working dilution should be determined by the end user.
Storage Buffer	In PBS, 150mM NaCl, pH 7.4 (50% glycerol, 0.02% sodium azide)
Storage Instruction	Store at -20°C. Aliquot to avoid repeated freezing and thawing.
Note	This product contains sodium azide: a POISONOUS AND HAZARDOUS SUBSTANCE which should be handled by trained staff only.

Applications

- Western Blot (Cell lysate)

Western blot analysis of extracts from HepG2 cells, using ADORA2A polyclonal antibody (Cat # PAB18061).
Peptide "+" means "with peptide blocking".

- Immunohistochemistry (Formalin/PFA-fixed paraffin-embedded sections)

Immunohistochemistry analysis of paraffin-embedded human brain tissue using ADORA2A polyclonal antibody (Cat # PAB18061).
Peptide "+" means "with peptide blocking".

- Immunohistochemistry

- Immunofluorescence

Immunofluorescence analysis of LoVo cells, using ADORA2A polyclonal antibody (Cat # PAB18061).
Peptide "+" means "with peptide blocking".

- Enzyme-linked Immunoabsorbent Assay

Gene Info — ADORA2A

Entrez GeneID	135
Protein Accession#	P29274
Gene Name	ADORA2A
Gene Alias	ADORA2, RDC8, hA2aR
Gene Description	adenosine A2a receptor
Omim ID	102776
Gene Ontology	Hyperlink
Gene Summary	This gene encodes a protein which is one of several receptor subtypes for adenosine. The activity of the encoded protein, a G-protein coupled receptor family member, is mediated by G proteins which activate adenylyl cyclase. The encoded protein is abundant in basal ganglia, vasculature and platelets and it is a major target of caffeine. [provided by RefSeq]
Other Designations	adenosine A2 receptor adenosine receptor subtype A2a

Publication Reference

- [A genome annotation-driven approach to cloning the human ORFeome.](#)

Collins JE, Wright CL, Edwards CA, Davis MP, Grinham JA, Cole CG, Goward ME, Aguado B, Mallya M, Mokrab Y, Huckle EJ, Beare DM, Dunham I.

Genome Biol 2004 Sep; 5(10):R84.

- [Characterization and chromosomal localization of the human A2a adenosine receptor gene: ADORA2A.](#)

Le F, Townsend-Nicholson A, Baker E, Sutherland GR, Schofield PR.

Biochemical and Biophysical Research Communications 1996 Jun; 223(2):461.

- [Molecular characterization of a human brain adenosine A2 receptor.](#)

Furlong TJ, Pierce KD, Selbie LA, Shine J.

Brain Research. Molecular Brain Research 1992 Sep; 15(1-2):62.

Pathway

- [Calcium signaling pathway](#)
- [Neuroactive ligand-receptor interaction](#)

- [Vascular smooth muscle contraction](#)

Disease

- [Amphetamine-Related Disorders](#)
- [Anorexia Nervosa](#)
- [Anxiety Disorders](#)
- [Arousal](#)
- [Arthritis](#)
- [Asthma](#)
- [Atherosclerosis](#)
- [Autistic Disorder](#)
- [Bulimia](#)
- [Calcinosis](#)
- [Cardiovascular Diseases](#)
- [Cognition](#)
- [Coronary Artery Disease](#)
- [Depressive Disorder](#)
- [Diabetes Mellitus](#)
- [Drug Hypersensitivity](#)
- [Drug Toxicity](#)
- [Edema](#)
- [Fatigue](#)
- [Genetic Predisposition to Disease](#)
- [Headache](#)
- [Huntington disease](#)
- [Hypertension](#)

- [Mental Disorders](#)
- [Migraine with Aura](#)
- [Mood Disorders](#)
- [Neuropsychological Tests](#)
- [Panic Disorder](#)
- [Parkinson disease](#)
- [Personality Inventory](#)
- [Psychiatric Status Rating Scales](#)
- [Psychomotor Performance](#)
- [Psychoses](#)
- [Reaction Time](#)
- [Schizophrenia](#)
- [Schizophrenic Psychology](#)
- [Sleep](#)
- [Sleep Disorders](#)
- [Sleep Initiation and Maintenance Disorders](#)
- [Substance Withdrawal Syndrome](#)
- [Substance-Related Disorders](#)
- [Syncope](#)
- [Weight Gain](#)