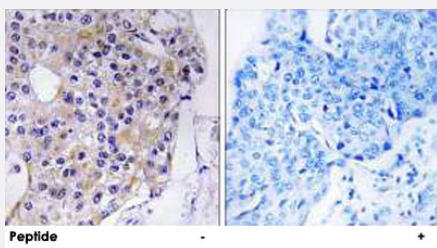


CP110 polyclonal antibody

Catalog # PAB17653 Size 100 ug

Applications



Immunohistochemistry (Formalin/PFA-fixed paraffin-embedded sections)

Immunohistochemistry analysis of paraffin-embedded human breast carcinoma tissue using CP110 polyclonal antibody (Cat # PAB17653).

Peptide "+" means "with peptide blocking".

Specification

Product Description Rabbit polyclonal antibody raised against synthetic peptide of CP110.

Immunogen A synthetic peptide corresponding to internal of human CP110.

Host Rabbit

Reactivity Human

Specificity This antibody detects endogenous levels of total CP110 protein.

Form Liquid

Recommend Usage Immunohistochemistry (1:50-1:100)
ELISA (1:40000)
The optimal working dilution should be determined by the end user.

Storage Buffer In PBS, pH 7.4 (150mM NaCl, 0.02% sodium azide, 50% glycerol)

Storage Instruction Store at -20°C.
Aliquot to avoid repeated freezing and thawing.

Note This product contains sodium azide: a POISONOUS AND HAZARDOUS SUBSTANCE which should be handled by trained staff only.

Applications

- Immunohistochemistry (Formalin/PFA-fixed paraffin-embedded sections)

Immunohistochemistry analysis of paraffin-embedded human breast carcinoma tissue using CP110 polyclonal antibody (Cat # PAB17653).

Peptide "+" means "with peptide blocking".

- Enzyme-linked Immunoabsorbent Assay

Gene Info — CP110

Entrez GeneID	9738
Protein Accession#	O43303
Gene Name	CP110
Gene Alias	DKFZp781G1416, KIAA0419
Gene Description	CP110 protein
Omim ID	609544
Gene Ontology	Hyperlink
Other Designations	OTTHUMP00000162162