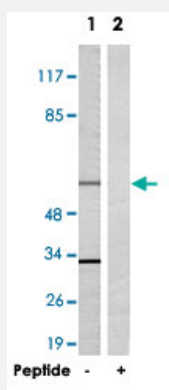


# TRAF3IP3 polyclonal antibody

Catalog # PAB17550      Size 100 ug

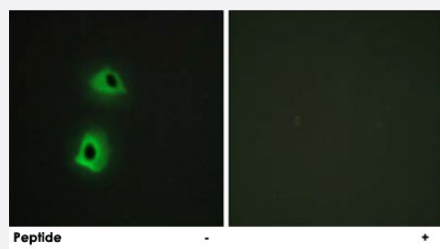
## Applications



### Western Blot (Cell lysate)

Western blot analysis of extracts from 293 cells, using TRAF3IP3 polyclonal antibody (Cat # PAB17550).

Peptide "+" means "with peptide blocking".



### Immunofluorescence

Immunofluorescence analysis of HeLa cells, using TRAF3IP3 polyclonal antibody (Cat # PAB17550).

Peptide "+" means "with peptide blocking".

## Specification

<b>Product Description</b>	Rabbit polyclonal antibody raised against synthetic peptide of TRAF3IP3.
<b>Immunogen</b>	A synthetic peptide corresponding to internal of human TRAF3IP3.
<b>Host</b>	Rabbit
<b>Reactivity</b>	Human, Mouse, Rat
<b>Specificity</b>	This antibody detects endogenous levels of total TRAF3IP3 protein.
<b>Form</b>	Liquid

<b>Recommend Usage</b>	Western Blot (1:500-1:1000) ELISA (1:20000) The optimal working dilution should be determined by the end user.
<b>Storage Buffer</b>	In PBS, pH 7.4 (150mM NaCl, 0.02% sodium azide, 50% glycerol)
<b>Storage Instruction</b>	Store at -20°C. Aliquot to avoid repeated freezing and thawing.
<b>Note</b>	This product contains sodium azide: a POISONOUS AND HAZARDOUS SUBSTANCE which should be handled by trained staff only.

## Applications

- Western Blot (Cell lysate)

Western blot analysis of extracts from 293 cells, using TRAF3IP3 polyclonal antibody (Cat # PAB17550).

Peptide "+" means "with peptide blocking".

- Immunofluorescence

Immunofluorescence analysis of HeLa cells, using TRAF3IP3 polyclonal antibody (Cat # PAB17550).

Peptide "+" means "with peptide blocking".

- Enzyme-linked Immunoabsorbent Assay

## Gene Info — TRAF3IP3

<b>Entrez GeneID</b>	<a href="#">80342</a>
<b>Protein Accession#</b>	<a href="#">Q9Y228</a>
<b>Gene Name</b>	TRAF3IP3
<b>Gene Alias</b>	DJ434O14.3, FLJ44151, MGC117354, MGC163289, T3JAM
<b>Gene Description</b>	TRAF3 interacting protein 3
<b>Omim ID</b>	<a href="#">608255</a>
<b>Gene Ontology</b>	<a href="#">Hyperlink</a>
<b>Other Designations</b>	TRAF3 interacting Jun N terminal kinase (JNK) activating modulator TRAF3-interacting JNK-activating modulator TRAF3-interacting Jun N-terminal kinase (JNK)-activating modulator

## Disease

- [Tobacco Use Disorder](#)