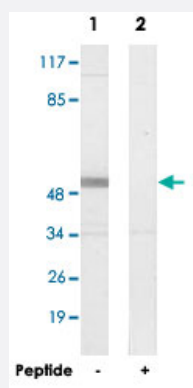


# SEPT1 polyclonal antibody

Catalog # PAB17425      Size 100 ug

## Applications



### Western Blot (Cell lysate)

Western blot analysis of extracts from Jurkat cells, using SEPT1 polyclonal antibody (Cat # PAB17425).

Peptide "+" means "with peptide blocking".

## Specification

**Product Description** Rabbit polyclonal antibody raised against synthetic peptide of SEPT1.

**Immunogen** A synthetic peptide corresponding to internal of human SEPT1.

**Host** Rabbit

**Reactivity** Human, Mouse, Rat

**Specificity** This antibody detects endogenous levels of total SEPT1 protein.

**Form** Liquid

**Recommend Usage** Western Blot (1:500-1:1000)  
ELISA (1:20000)  
The optimal working dilution should be determined by the end user.

**Storage Buffer** In PBS, pH 7.4 (150mM NaCl, 0.02% sodium azide, 50% glycerol)

**Storage Instruction** Store at -20°C.  
Aliquot to avoid repeated freezing and thawing.

**Note**

This product contains sodium azide: a POISONOUS AND HAZARDOUS SUBSTANCE which should be handled by trained staff only.

## Applications

- Western Blot (Cell lysate)

Western blot analysis of extracts from Jurkat cells, using SEPT1 polyclonal antibody (Cat # PAB17425).

Peptide "+" means "with peptide blocking".

- Enzyme-linked Immunoabsorbent Assay

## Gene Info — SEPT1

Entrez GeneID	<a href="#">1731</a>
---------------	----------------------

Protein Accession#	<a href="#">Q8WYJ6</a>
--------------------	------------------------

Gene Name	SEPT1
-----------	-------

Gene Alias	DIFF6, LARP, MGC20394, PNUTL3, SEP1
------------	-------------------------------------

Gene Description	sepin 1
------------------	---------

Gene Ontology	<a href="#">Hyperlink</a>
---------------	---------------------------

Gene Summary	This gene is a member of the sepin family of GTPases. Members of this family are required for cytokinesis. This gene encodes a protein associated with the tau-based paired helical filament core, and may contribute to the formation of neurofibrillary tangles in Alzheimer's disease. [provided by RefSeq]
--------------	--

Other Designations	differentiation 6 (deoxyguanosine triphosphate triphosphohydrolase) serologically defined breast cancer antigen NY-BR-24
--------------------	--