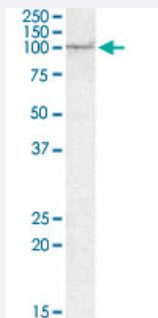


# AAK1 polyclonal antibody

Catalog # PAB17258      Size 100 ug

## Applications



### Western Blot (Tissue lysate)

AAK1 polyclonal antibody (Cat # PAB17258) (1 ug/mL) staining of human amygdala lysate (35 ug protein in RIPA buffer). Primary incubation was 1 hour. Detected by chemiluminescence.

## Specification

<b>Product Description</b>	Goat polyclonal antibody raised against synthetic peptide of AAK1.
<b>Immunogen</b>	A synthetic peptide corresponding to amino acids at internal region of human AAK1.
<b>Sequence</b>	C-GSPRTSQQNVYNPSE
<b>Host</b>	Goat
<b>Theoretical MW (kDa)</b>	104
<b>Reactivity</b>	Human
<b>Form</b>	Liquid
<b>Purification</b>	Antigen affinity purification
<b>Concentration</b>	0.5 mg/mL
<b>Recommend Usage</b>	ELISA (1:16000) Western Blot (1-3 ug/mL) The optimal working dilution should be determined by the end user.
<b>Storage Buffer</b>	In Tris saline, pH 7.3 (0.5% BSA, 0.02% sodium azide)

**Storage Instruction**

Store at -20°C.  
Aliquot to avoid repeated freezing and thawing.

**Note**

This product contains sodium azide: a POISONOUS AND HAZARDOUS SUBSTANCE which should be handled by trained staff only.

## Applications

- Western Blot (Tissue lysate)

AAK1 polyclonal antibody (Cat # PAB17258) (1 ug/mL) staining of human amygdala lysate (35 ug protein in RIPA buffer). Primary incubation was 1 hour. Detected by chemiluminescence.

- Enzyme-linked Immunoabsorbent Assay

## Gene Info — AAK1

**Entrez GeneID**[22848](#)**Protein Accession#**[NP\\_055726.3](#)**Gene Name**

AAK1

**Gene Alias**

DKFZp686F03202, DKFZp686K16132, FLJ23712, FLJ25931, FLJ31060, FLJ42882, FLJ45252, KIAA1048, MGC138170, MGC164568, MGC164570

**Gene Description**

AP2 associated kinase 1

**Gene Ontology**[Hyperlink](#)**Gene Summary**

Adaptor-related protein complex 2 (AP-2 complexes) functions during receptor-mediated endocytosis to trigger clathrin assembly, interact with membrane-bound receptors, and recruit endocytic accessory factors. This gene encodes a member of the SNF1 subfamily of Ser/Thr protein kinases. The protein interacts with and phosphorylates a subunit of the AP-2 complex, which promotes binding of AP-2 to sorting signals found in membrane-bound receptors and subsequent receptor endocytosis. Its kinase activity is stimulated by clathrin. Alternatively spliced transcript variants have been described, but their biological validity has not been determined. [provided by RefSeq]

**Other Designations**

adaptor-associated kinase 1

## Publication Reference

- [A novel AAK1 splice variant functions at multiple steps of the endocytic pathway.](#)

Henderson DM, Conner SD.

Molecular Biology of the Cell 2007 May; 18(7):2698.

## Disease

- [Parkinson Disease](#)
- [Tobacco Use Disorder](#)