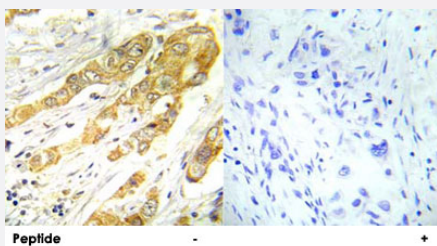


ERK1/2 polyclonal antibody

Catalog # PAB16985 Size 100 ug

Applications



Immunohistochemistry (Formalin/PFA-fixed paraffin-embedded sections)

Immunohistochemical analysis of paraffin-embedded human breast carcinoma tissue using ERK1/2 polyclonal antibody (Cat # PAB16985).

Specification

Product Description	Rabbit polyclonal antibody raised against synthetic peptide of ERK1/2.
Immunogen	A synthetic peptide corresponding to residues surrounding T202/Y204 of human ERK1/2.
Host	Rabbit
Reactivity	Human, Mouse, Rat
Specificity	This antibody detects endogenous levels of total ERK1/2 protein.
Form	Liquid
Recommend Usage	Western Blot (1:500-1:1000) Immunohistochemistry (1:50-1:100) ELISA (1:20000) The optimal working dilution should be determined by the end user.
Storage Buffer	In 20 mM PBS, 0.15 M NaCl, pH 7.2 (0.01% sodium azide)
Storage Instruction	Store at 4°C for three months. For long term storage store at -20°C. Aliquot to avoid repeated freezing and thawing.

Note

This product contains sodium azide: a POISONOUS AND HAZARDOUS SUBSTANCE which should be handled by trained staff only.

Applications

- Western Blot
- Immunohistochemistry (Formalin/PFA-fixed paraffin-embedded sections)

Immunohistochemical analysis of paraffin-embedded human breast carcinoma tissue using ERK1/2 polyclonal antibody (Cat # PAB16985).

- Enzyme-linked Immunoabsorbent Assay

Publication Reference

- [Oncogenic Ras expression increases cytoplasmic distribution and phosphorylation of CSE1L in B16F10 melanoma cells.](#)

Wu PR, Yeh CM, Chang CC, Huang HY, Wang KC, Shih HJ, Lee IY, Jiang MC, Lin YM.

International Journal of Clinical and Experimental Pathology 2016 Oct; 9(10):9889.

Application: WB, Mouse, B16F10 melanoma cells

- [Differential regulation of MAP kinase signalling by dual-specificity protein phosphatases.](#)

Owens DM, Keyse SM.

Oncogene 2007 May; 26(22):3203.

- [Targeting the Raf-MEK-ERK mitogen-activated protein kinase cascade for the treatment of cancer.](#)

Roberts PJ, Der CJ.

Oncogene 2007 May; 26(22):3291.

Application: WB-Tr, Human, Mammalian cells

- [Identification of regulatory phosphorylation sites in mitogen-activated protein kinase \(MAPK\)-activated protein kinase-1a/p90rsk that are inducible by MAPK.](#)

Dalby KN, Morrice N, Caudwell FB, Avruch J, Cohen P.

The Journal of Biological Chemistry 1998 Jan; 273(3):1496.