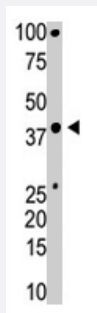


BMI1 polyclonal antibody

Catalog # PAB1687

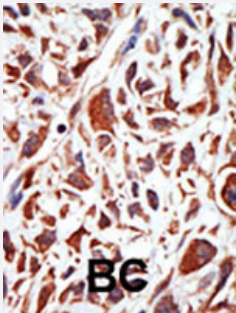
Size 400 uL

Applications



Western Blot (Tissue lysate)

The BMI1 polyclonal antibody (Cat # PAB1687) is used in Western blot to detect BMI1 in mouse muscle tissue lysate.



Immunohistochemistry (Formalin/PFA-fixed paraffin-embedded sections)

Formalin-fixed and paraffin-embedded human cancer tissue reacted with BMI1 polyclonal antibody (Cat # PAB1687), which was peroxidase-conjugated to the secondary antibody, followed by DAB staining. This data demonstrates the use of this antibody for immunohistochemistry; clinical relevance has not been evaluated. BC = breast carcinoma.

Specification

Product Description	Rabbit polyclonal antibody raised against synthetic peptide of BMI1.
Immunogen	A synthetic peptide (conjugated with KLH) corresponding to C-terminus of human BMI1.
Host	Rabbit
Reactivity	Human, Mouse
Form	Liquid
Purification	Protein G purification

Recommend Usage	Western Blot (1:1000) Immunohistochemistry (1:50-100) The optimal working dilution should be determined by the end user.
Storage Buffer	In PBS (0.09% sodium azide)
Storage Instruction	Store at 4°C. For long term storage store at -20°C. Aliquot to avoid repeated freezing and thawing.
Note	This product contains sodium azide: a POISONOUS AND HAZARDOUS SUBSTANCE which should be handled by trained staff only.

Applications

- Western Blot (Tissue lysate)

The BMI1 polyclonal antibody (Cat # PAB1687) is used in Western blot to detect BMI1 in mouse muscle tissue lysate.

- Immunohistochemistry (Formalin/PFA-fixed paraffin-embedded sections)

Formalin-fixed and paraffin-embedded human cancer tissue reacted with BMI1 polyclonal antibody (Cat # PAB1687), which was peroxidase-conjugated to the secondary antibody, followed by DAB staining. This data demonstrates the use of this antibody for immunohistochemistry; clinical relevance has not been evaluated. BC = breast carcinoma.

Gene Info — BMI1

Entrez GeneID	648
Protein Accession#	NP_005171;P35226
Gene Name	BMI1
Gene Alias	MGC12685, PCGF4, RNF51
Gene Description	BMI1 polycomb ring finger oncogene
Omim ID	164831
Gene Ontology	Hyperlink
Other Designations	B lymphoma Mo-MLV insertion region 1 homolog flvi-2/bmi-1 murine leukemia viral (bmi-1) oncogene homolog oncogene BMI-1 polycomb group ring finger 4

Publication Reference

- [Bmi-1 regulation of INK4A-ARF is a downstream requirement for transformation of hematopoietic progenitors by E2a-Pbx1.](#)

Smith KS, Chanda SK, Lingbeek M, Ross DT, Botstein D, van Lohuizen M, Cleary ML.

Molecular Cell 2003 Aug; 12(2):393.

Application: WB, Human, Human leukemia cell lines, including 697, Hal-01, HB1119, RCH-ACV, Reh, RS4:11 cells; Human pre-B cell line A2

- [MLL repression domain interacts with histone deacetylases, the polycomb group proteins HPC2 and BMI-1, and the corepressor C-terminal-binding protein.](#)

Xia ZB, Anderson M, Diaz MO, Zeleznik-Le NJ.

PNAS 2003 Jul; 100(14):8342.

Application: WB-Tr, Human, HEK 293T cells

- [Control of the replicative life span of human fibroblasts by p16 and the polycomb protein Bmi-1.](#)

Itahana K, Zou Y, Itahana Y, Martinez JL, Beausejour C, Jacobs JJ, Van Lohuizen M, Band V, Campisi J, Dimri GP.

Molecular and Cellular Biology 2003 Jan; 23(1):389.