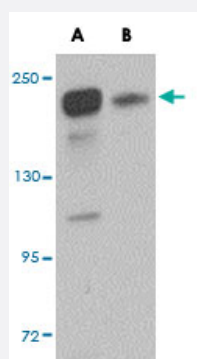


# SIPA1L2 polyclonal antibody

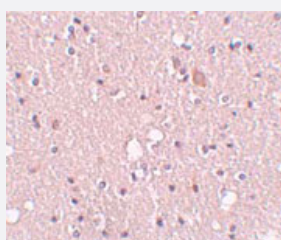
Catalog # PAB16865      Size 100 ug

## Applications



### Western Blot (Tissue lysate)

Western blot analysis of SIPA1L2 in rat brain tissue lysate with SIPA1L2 polyclonal antibody (Cat # PAB16865) at 1 ug/mL in (A) the absence and (B) the presence of blocking peptide.



### Immunohistochemistry

Immunohistochemical staining of human brain tissue with 5 ug/mL SIPA1L2 polyclonal antibody (Cat # PAB16865).

## Specification

<b>Product Description</b>	Rabbit polyclonal antibody raised against synthetic peptide of SIPA1L2.
<b>Immunogen</b>	A synthetic peptide corresponding to N-terminus 19 amino acids of human SIPA1L2.
<b>Host</b>	Rabbit
<b>Reactivity</b>	Human, Mouse, Rat
<b>Form</b>	Liquid
<b>Recommend Usage</b>	Western Blot (0.5-1 ug/mL) The optimal working dilution should be determined by the end user.

Storage Buffer	In PBS (0.02% sodium azide)
Storage Instruction	Store at 4°C for three months. For long term storage store at -20°C. Aliquot to avoid repeated freezing and thawing.
Note	This product contains sodium azide: a POISONOUS AND HAZARDOUS SUBSTANCE which should be handled by trained staff only.

## Applications

- Western Blot (Tissue lysate)

Western blot analysis of SIPA1L2 in rat brain tissue lysate with SIPA1L2 polyclonal antibody (Cat # PAB16865) at 1 ug/mL in (A) the absence and (B) the presence of blocking peptide.

- Immunohistochemistry

Immunohistochemical staining of human brain tissue with 5 ug/mL SIPA1L2 polyclonal antibody (Cat # PAB16865).

- Enzyme-linked Immunoabsorbent Assay

## Gene Info — SIPA1L2

Entrez GeneID	<a href="#">57568</a>
Protein Accession#	<a href="#">NP_065859</a>
Gene Name	SIPA1L2
Gene Alias	FLJ23126, FLJ23632, KIAA1389, SPAL2
Gene Description	signal-induced proliferation-associated 1 like 2
Gene Ontology	<a href="#">Hyperlink</a>
Other Designations	OTTHUMP00000035939 SPA-1-like 2

## Disease

- [Cognition](#)
- [Tobacco Use Disorder](#)