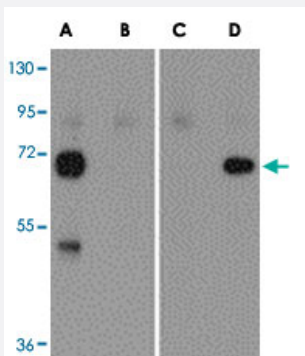


Seasonal H1N1 Hemagglutinin polyclonal antibody

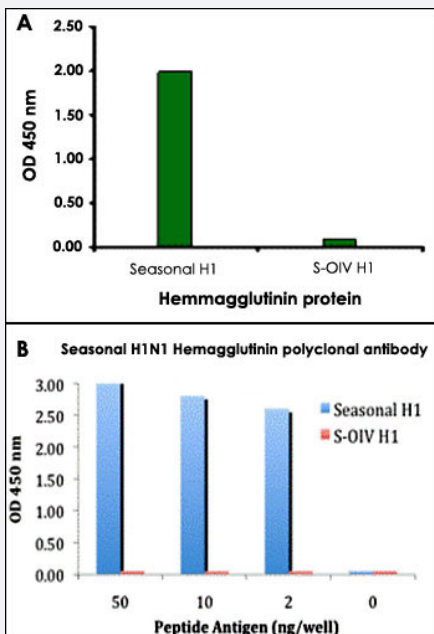
Catalog # PAB16771 Size 100 ug

Applications



Western Blot (Recombinant protein)

Western blot analysis of Hemagglutinin using recombinant seasonal Hemagglutinin (Lanes A & B) and swine-origin Hemagglutinin (Lanes C & D) with Seasonal H1N1 Hemagglutinin polyclonal antibody (Cat # PAB16771) at 2 ug/mL (Lanes A & C) and Swine H1N1 Hemagglutinin polyclonal antibody (Cat # PAB16773) at 2 ug/mL (Lanes B & D).



Enzyme-linked Immunoabsorbent Assay

Image A. Seasonal Hemagglutinin antibody at 2 ug/mL specifically recognizes seasonal influenza virus A H1N1 but not swine-origin influenza virus (S-OIV) A H1N1 Hemagglutinin protein.

Image B. ELISA results using Seasonal H1N1 Hemagglutinin antibody at 1 ug/mL and the blocking and corresponding peptides at 50, 10, 2 and 0 ng/mL.

Specification

Product Description

Rabbit polyclonal antibody raised against synthetic peptide of Seasonal H1N1 Hemagglutinin.

Immunogen

A synthetic peptide corresponding to Seasonal H1N1 Hemagglutinin.

Host	Rabbit
Reactivity	Viruses
Specificity	The peptide sequence is unique from the peptide sequence for product PAB16767 and PAB16775. This antibody is a cognate pair with antibody PAB16773.
Form	Liquid
Recommend Usage	ELISA (2 ng of free peptide at 1 ug/mL) The optimal working dilution should be determined by the end user.
Storage Buffer	In PBS (0.02% sodium azide)
Storage Instruction	Store at 4°C for three months. For long term storage store at -20°C. Aliquot to avoid repeated freezing and thawing.
Note	This product contains sodium azide: a POISONOUS AND HAZARDOUS SUBSTANCE which should be handled by trained staff only.

Applications

- Western Blot (Recombinant protein)

Western blot analysis of Hemagglutinin using recombinant seasonal Hemagglutinin (Lanes A & B) and swine-origin Hemagglutinin (Lanes C & D) with Seasonal H1N1 Hemagglutinin polyclonal antibody (Cat # PAB16771) at 2 ug/mL (Lanes A & C) and Swine H1N1 Hemagglutinin polyclonal antibody (Cat # PAB16773) at 2 ug/mL (Lanes B & D).

- Enzyme-linked Immunoabsorbent Assay

Image A. Seasonal Hemagglutinin antibody at 2 ug/mL specifically recognizes seasonal influenza virus A H1N1 but not swine-origin influenza virus (S-OIV) A H1N1 Hemagglutinin protein.

Image B. ELISA results using Seasonal H1N1 Hemagglutinin antibody at 1 ug/mL and the blocking and corresponding peptides at 50, 10, 2 and 0 ng/mL.

Publication Reference

- [The persistent legacy of the 1918 influenza virus.](#)

Morens DM, Taubenberger JK, Fauci AS.

The New England Journal of Medicine 2009 Jun; 361(3):225.

- [Emergence of a novel swine-origin influenza A \(H1N1\) virus in humans.](#)

Dawood FS, Jain S, Finelli L, Shaw MW, Lindstrom S, Garten RJ, Gubareva LV, Xu X, Bridges CB, Uyeki TM.

The New England Journal of Medicine 2009 May; 360(25):2605.

- [Swine flu goes global.](#)

Butler D.

Nature 2009 Apr; 458(7242):1082.