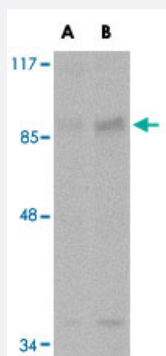


AAK1 polyclonal antibody

Catalog # PAB16579 Size 100 ug

Applications



Western Blot (Cell lysate)

Western blot analysis of AAK1 in A-20 cell lysate with AAK1 polyclonal antibody (Cat # PAB16579) at (A) 1 and (B) 2 ug/mL .

Specification

Product Description	Rabbit polyclonal antibody raised against synthetic peptide of AAK1.
Immunogen	A synthetic peptide corresponding to C-terminus 18 amino acids of human AAK1.
Host	Rabbit
Reactivity	Human, Mouse, Rat
Form	Liquid
Recommend Usage	Western Blot (1-2 ug/mL) The optimal working dilution should be determined by the end user.
Storage Buffer	In PBS (0.02% sodium azide)
Storage Instruction	Store at 4°C for three months. For long term storage store at -20°C. Aliquot to avoid repeated freezing and thawing.
Note	This product contains sodium azide: a POISONOUS AND HAZARDOUS SUBSTANCE which should be handled by trained staff only.

Applications

- Western Blot (Cell lysate)

Western blot analysis of AAK1 in A-20 cell lysate with AAK1 polyclonal antibody (Cat # PAB16579) at (A) 1 and (B) 2 ug/mL .

- Enzyme-linked Immunoabsorbent Assay

Gene Info — AAK1

Entrez GeneID [22848](#)

Protein Accession# [NP_055726](#)

Gene Name AAK1

Gene Alias DKFZp686F03202, DKFZp686K16132, FLJ23712, FLJ25931, FLJ31060, FLJ42882, FLJ45252, KIAA1048, MGC138170, MGC164568, MGC164570

Gene Description AP2 associated kinase 1

Gene Ontology [Hyperlink](#)

Gene Summary Adaptor-related protein complex 2 (AP-2 complexes) functions during receptor-mediated endocytosis to trigger clathrin assembly, interact with membrane-bound receptors, and recruit accessory factors. This gene encodes a member of the SNF1 subfamily of Ser/Thr protein kinases. The protein interacts with and phosphorylates a subunit of the AP-2 complex, which promotes binding of AP-2 to sorting signals found in membrane-bound receptors and subsequent receptor endocytosis. Its kinase activity is stimulated by clathrin. Alternatively spliced transcript variants have been described, but their biological validity has not been determined. [provided by RefSeq]

Other Designations adaptor-associated kinase 1

Publication Reference

- [A novel AAK1 splice variant functions at multiple steps of the endocytic pathway.](#)

Henderson DM, Conner SD.

Molecular Biology of the Cell 2007 May; 18(7):2698.

- [The Ark1/Prk1 family of protein kinases. Regulators of endocytosis and the actin skeleton.](#)

Smythe E, Ayscough KR.

EMBO Reports 2003 Mar; 4(3):246.

Application: WB, Human, Mammalian cells

- [Identification of an adaptor-associated kinase, AAK1, as a regulator of clathrin-mediated endocytosis.](#)

Conner SD, Schmid SL.

The Journal of Cell Biology 2002 Mar; 156(5):921.

Application: IF, WB, Human, Rat, HeLa cells, Rat hippocampal neurons

Disease

- [Parkinson Disease](#)
- [Tobacco Use Disorder](#)