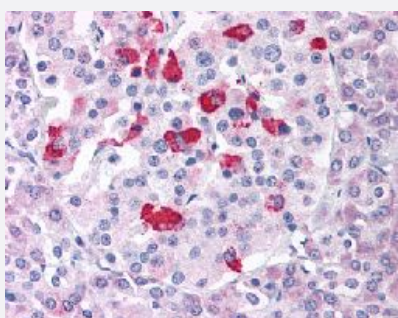


# BACE1 polyclonal antibody

Catalog # PAB16485      Size 50 ug

## Applications



### Immunohistochemistry (Formalin/PFA-fixed paraffin-embedded sections)

Immunohistochemical (Formalin/PFA-fixed paraffin-embedded sections) staining in human pancreas with BACE1 polyclonal antibody (Cat # PAB16485).

## Specification

<b>Product Description</b>	Rabbit polyclonal antibody raised against synthetic peptide of BACE1.
<b>Immunogen</b>	A synthetic peptide (conjugated with KLH) corresponding to human BACE1.
<b>Host</b>	Rabbit
<b>Reactivity</b>	Bovine, Dog, Guinea pig, Hamster, Horse, Human, Monkey, Mouse, Pig, Rabbit, Rat
<b>Specificity</b>	Internal domain of human.
<b>Form</b>	Liquid
<b>Purification</b>	Immunoaffinity purification
<b>Recommend Usage</b>	Immunohistochemistry (Formalin/PFA-fixed paraffin-embedded sections) (2.5 ug/mL) The optimal working dilution should be determined by the end user.
<b>Storage Buffer</b>	In PBS (0.09% sodium azide)
<b>Storage Instruction</b>	Store at 4°C. For long term storage store at -80°C. Aliquot to avoid repeated freezing and thawing.

**Note** This product contains sodium azide: a POISONOUS AND HAZARDOUS SUBSTANCE which should be handled by trained staff only.

## Applications

- Immunohistochemistry (Formalin/PFA-fixed paraffin-embedded sections)

Immunohistochemical (Formalin/PFA-fixed paraffin-embedded sections) staining in human pancreas with BACE1 polyclonal antibody (Cat # PAB16485).

## Gene Info — BACE1

**Entrez GeneID** [23621](#)

**Protein Accession#** [P56817](#)

**Gene Name** BACE1

**Gene Alias** ASP2, BACE, FLJ90568, HSPC104, KIAA1149

**Gene Description** beta-site APP-cleaving enzyme 1

**Omim ID** [604252](#)

**Gene Ontology** [Hyperlink](#)

**Gene Summary** Cerebral deposition of amyloid beta peptide is an early and critical feature of Alzheimer's disease. Amyloid beta peptide is generated by proteolytic cleavage of amyloid precursor protein (APP) by two proteases, one of which is the protein encoded by this gene. The encoded protein, a member of the peptidase A1 protein family, is a type I integral membrane glycoprotein and aspartic protease that is found mainly in the Golgi. Four transcript variants encoding different isoforms have been described for this gene. [provided by RefSeq]

**Other Designations** APP beta-secretase|aspartyl protease 2|beta-secretase|beta-site amyloid beta A4 precursor protein-cleaving enzyme|beta-site amyloid precursor protein cleaving enzyme|memapsin-2|membrane-associated aspartic protease 2|transmembrane aspartic proteinase Asp2

## Disease

- [Alzheimer disease](#)
- [Amnesia](#)
- [Cardiovascular Diseases](#)

- [Cognition](#)
- [Cognition Disorders](#)
- [Diabetes Complications](#)
- [Genetic Predisposition to Disease](#)
- [Metabolic Syndrome X](#)
- [Neoplasms](#)
- [Neuropsychological Tests](#)
- [Osteoporosis](#)